

Compal Confidential

Schematics Document

AUBURNDALE with Intel
IBEX PEAK-M core logic

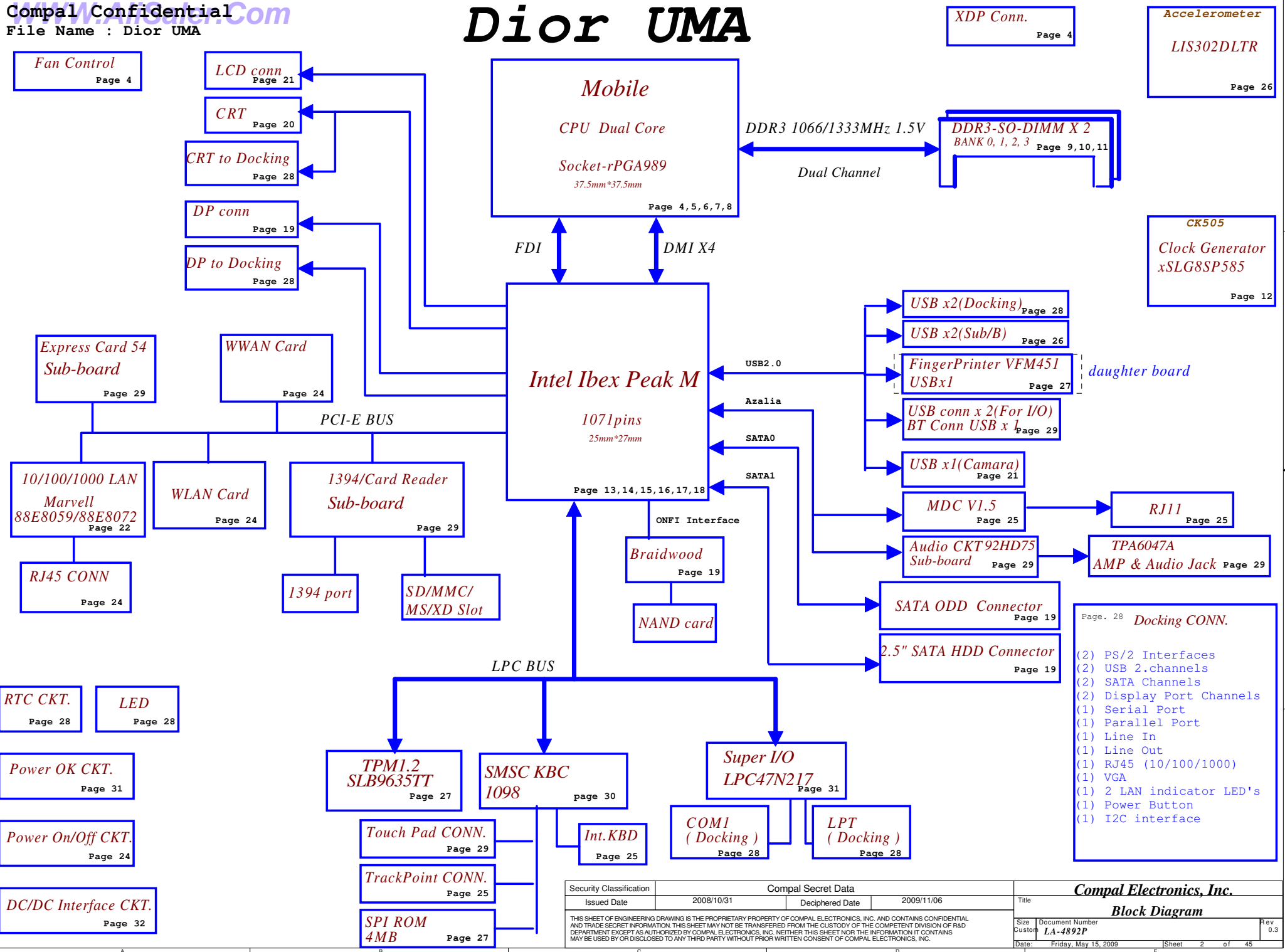
Dior UMA

2009-05-16

REV: 0.3

Security Classification	Compal Secret Data			Compal Electronics, Inc.		
Issued Date	2008/10/31	Deciphered Date	2009/11/06	Title	Cover Sheet	
THIS SHEET OF ENGINEERING DRAWING IS THE PROPRIETARY PROPERTY OF COMPAL ELECTRONICS, INC. AND CONTAINS CONFIDENTIAL AND TRADE SECRET INFORMATION. THIS SHEET MAY NOT BE TRANSFERRED FROM THE CUSTODY OF THE COMPETENT DIVISION OF R&D DEPARTMENT EXCEPT AS AUTHORIZED BY COMPAL ELECTRONICS, INC. NEITHER THIS SHEET NOR THE INFORMATION IT CONTAINS MAY BE USED BY OR DISCLOSED TO ANY THIRD PARTY WITHOUT PRIOR WRITTEN CONSENT OF COMPAL ELECTRONICS, INC.				Size Custom	Document Number LA-4892P	Rev 0.3
Date: Friday, May 15, 2009				Sheet 1 of 45		

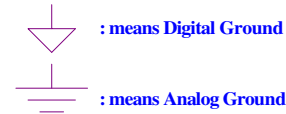
Dior UMA



Voltage Rails (O MEANS ON X MEANS OFF)

power plane State	+RTCVCC	+B +3VL	+5VALW +3VALW	+1.5V +0.75V	+5VS +3VS +1.5VS +VCCP +CPU_CORE +1.05VS +1.8VS
S0	O	O	O	O	O
S1	O	O	O	O	O
S3	O	O	O	O	X
S5 S4/AC	O	O	O	X	X
S5 S4/ Battery only	O	O	X	X	X
S5 S4/AC & Battery don't exist	O	X	X	X	X

Symbol Note :



Install below 43 level BOM structure for ver. 0.2

8072@ : Install for 8072 NIC controller

Install below 45 level BOM structure for ver. 0.2

45@ : means just put it in the BOM of 45 level.

Reserve below BOM structure for ver. 0.2

@ : means just reserve , no build

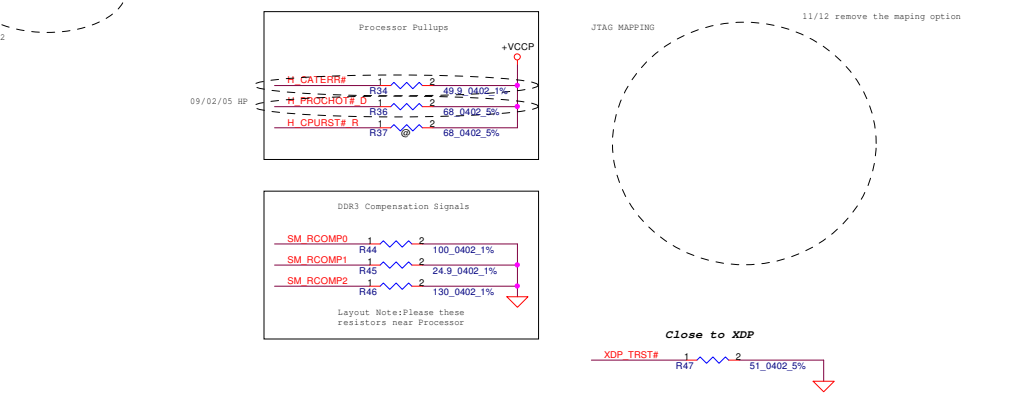
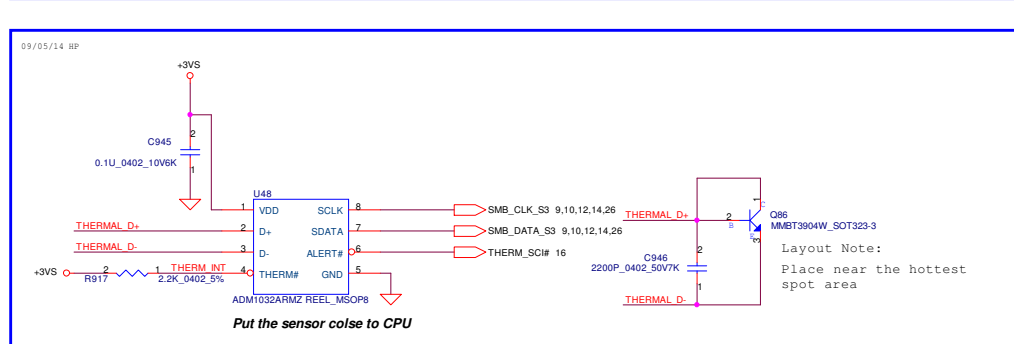
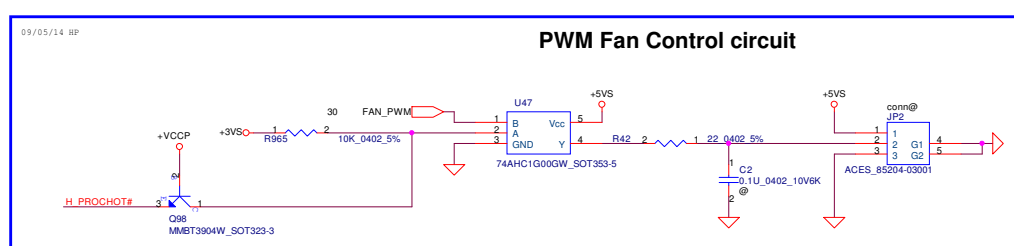
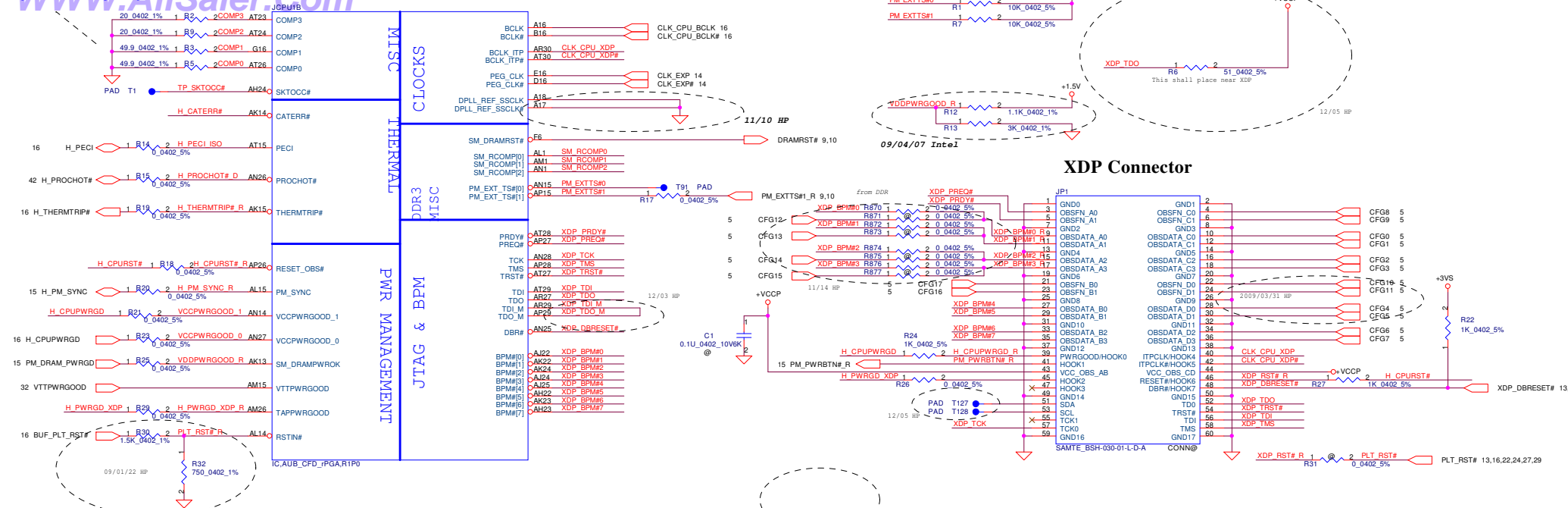
CONN@ : means ME part.

8059@ : Install for 8059 NIC controller

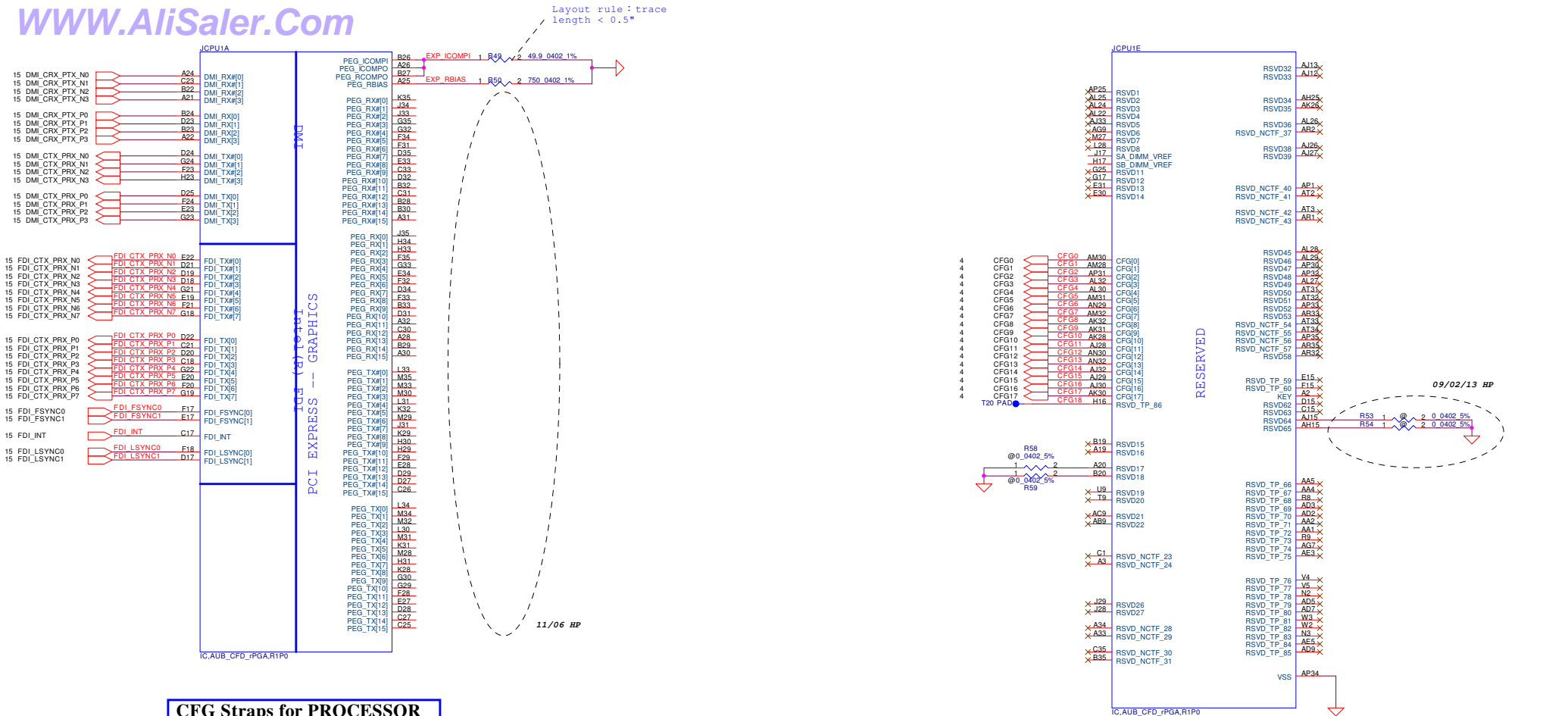
SMBUS Control Table

	SOURCE	BATT	XDP	SODIMM	CLK CHIP	MINI CARD	DOCK	NIC	THERMAL SENSOR	G-SENSOR
SMB_EC_CK1 SMB_EC_DA1	SMSC1098	V	X	X	X	X	X	X	X	X
SMBCLK SMBDATA	Calpella	X	V	V	V	V	V	V	X	V
SML0CLK SML0DATA	Calpella	X	X	X	X	X	X	X	X	X
SML1CLK SML1DATA	Calpella	X	X	X	X	X	X	X	V	X

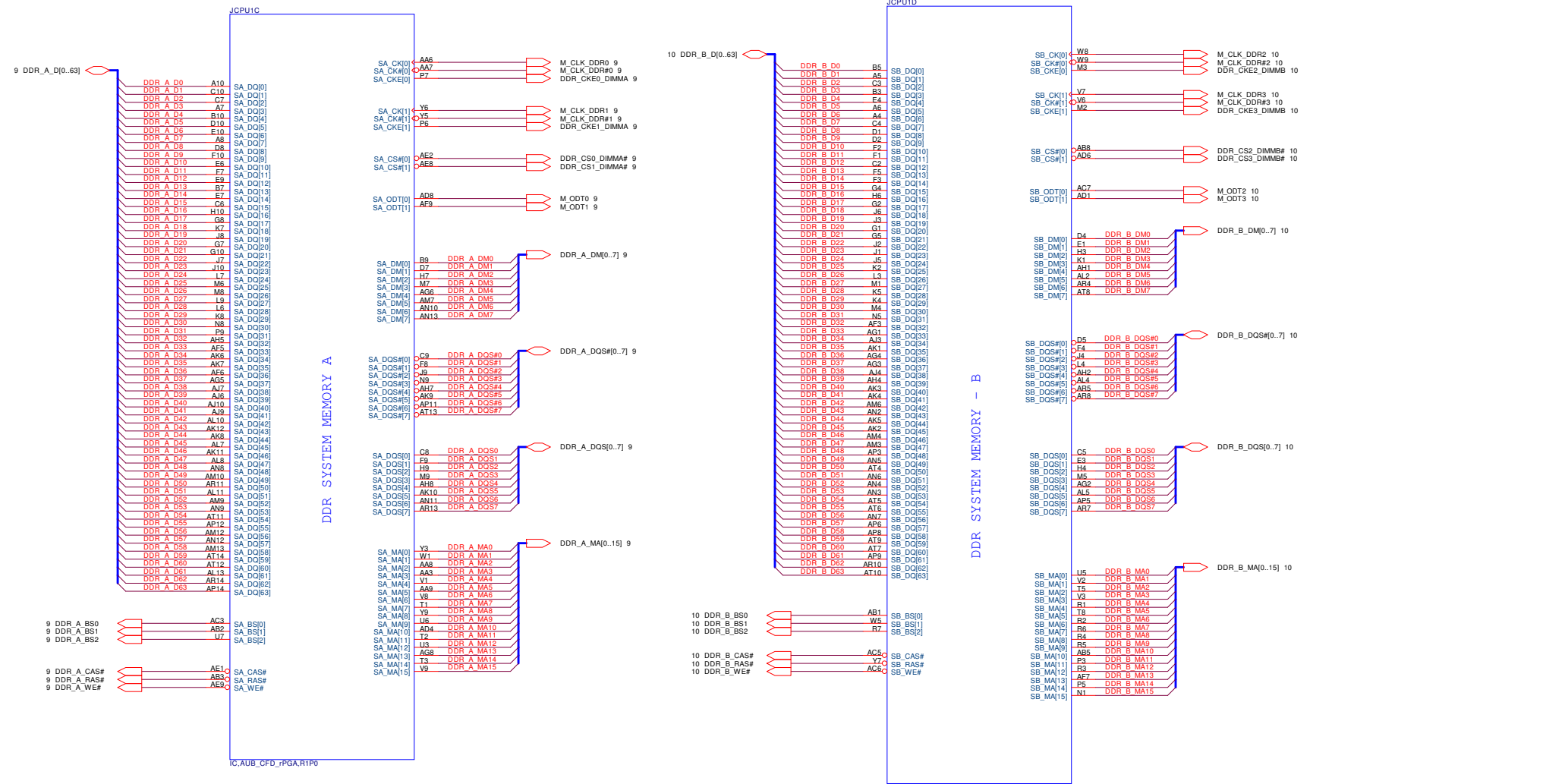
Security Classification	Compal Secret Data			Compal Electronics, Inc.		
Issued Date	2008/10/31	Deciphered Date	2009/11/06	Notes List		
THIS SHEET OF ENGINEERING DRAWING IS THE PROPRIETARY PROPERTY OF COMPAL ELECTRONICS, INC. AND CONTAINS CONFIDENTIAL AND TRADE SECRET INFORMATION. THIS SHEET MAY NOT BE TRANSFERRED FROM THE CUSTODY OF THE COMPETENT DIVISION OF R&D DEPARTMENT EXCEPT AS AUTHORIZED BY COMPAL ELECTRONICS, INC. NEITHER THIS SHEET NOR THE INFORMATION IT CONTAINS MAY BE USED BY OR DISCLOSED TO ANY THIRD PARTY WITHOUT PRIOR WRITTEN CONSENT OF COMPAL ELECTRONICS, INC.				Size Custom	Document Number LA-4892P	Rev 0.3
Date	Friday, May 15, 2009	Sheet	3	of	45	



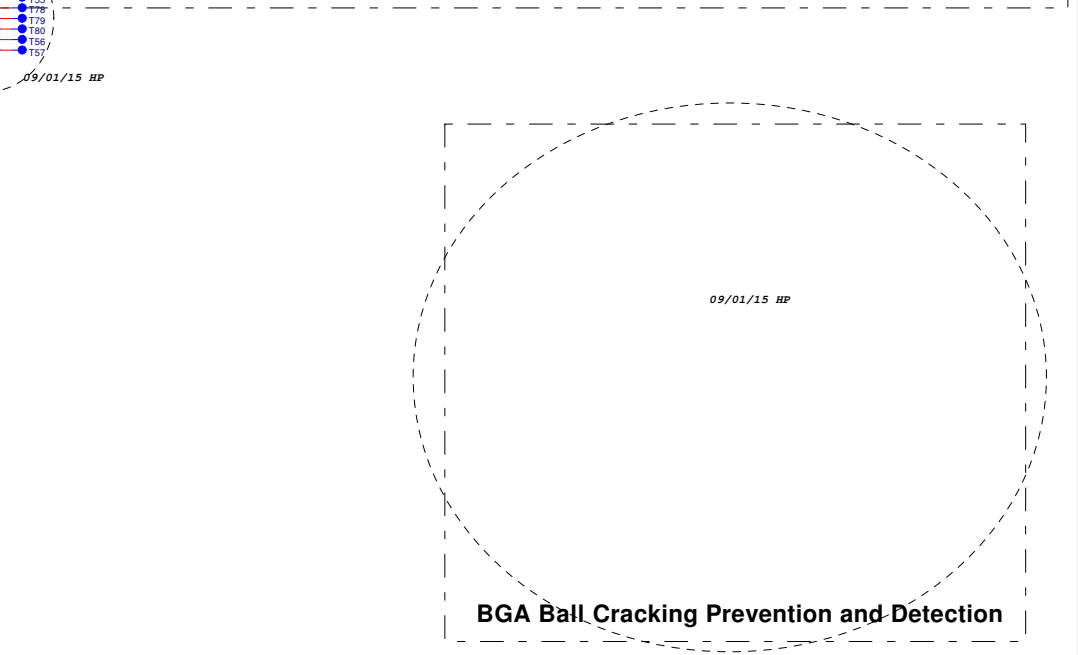
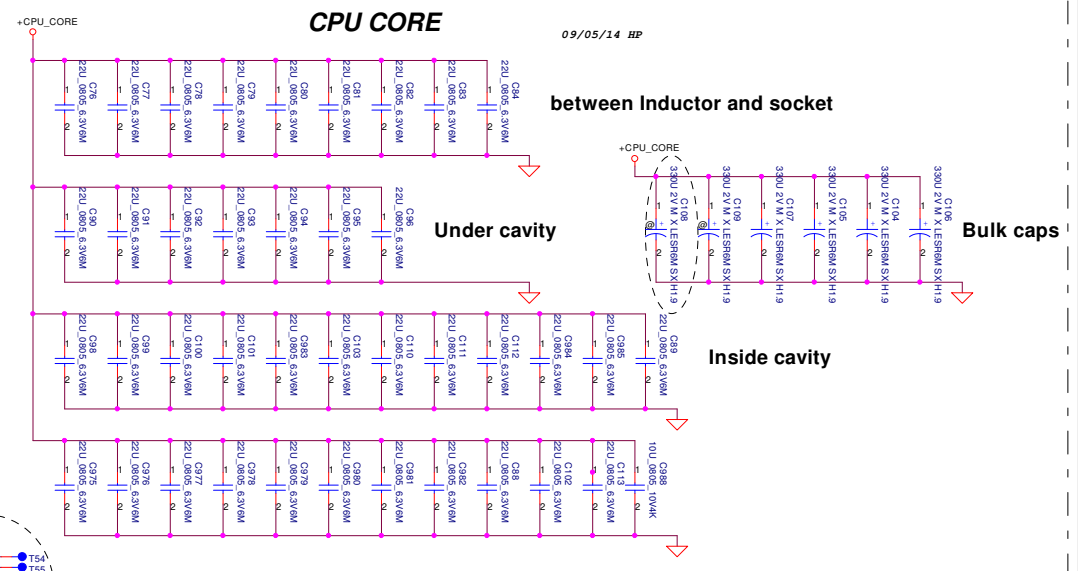
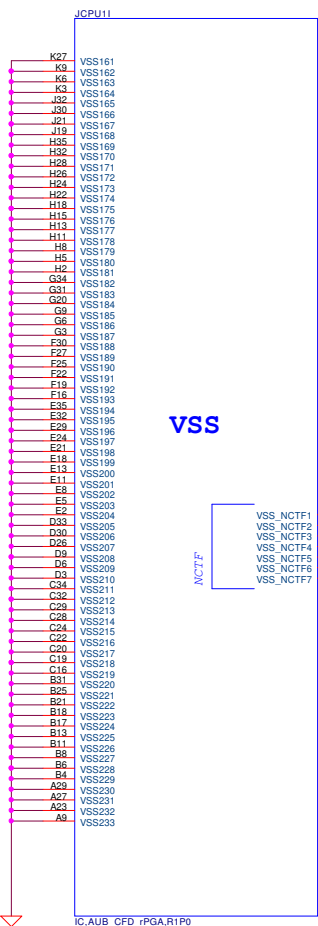
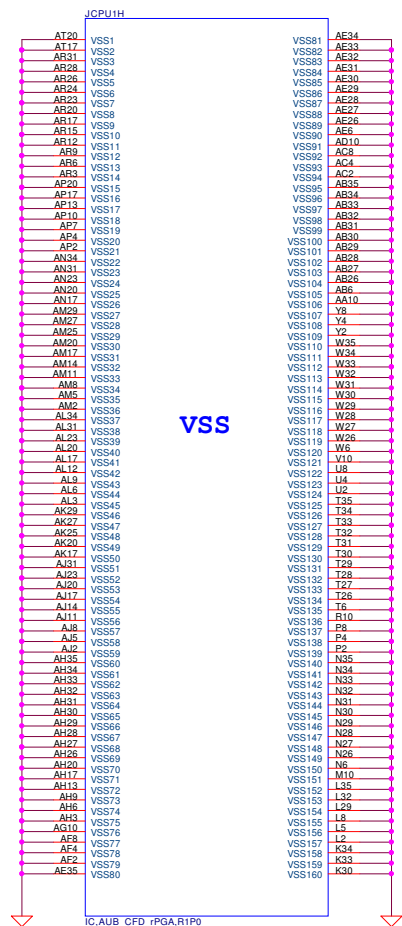
Security Classification	Compal Secret Data		Compal Electronics, Inc.	
Issued Date	2008/10/31	Deciphered Date	2009/11/06	
THIS SET OF ENGINEERING DRAWING IS THE PROPRIETARY PROPERTY OF COMPAL ELECTRONICS, INC. AND CONTAINS CONFIDENTIAL AND TRADE SECRET INFORMATION. THIS SHEET MAY NOT BE TRANSFERRED FROM THE CUSTODY OF THE COMPETENT DIVISION OF R&D DEPARTMENT EXCEPT AS AUTHORIZED BY COMPAL ELECTRONICS, INC. NEITHER THIS SHEET NOR THE INFORMATION IT CONTAINS MAY BE REPRODUCED OR TRANSMITTED IN ANY FORM OR BY ANY MEANS, WITHOUT THE WRITTEN CONSENT OF COMPAL ELECTRONICS, INC.			Title	Auburndale(1/5)-Thermal/XDP
			Size	Document Number
			Custom	LA-4892P
				Rev. 0



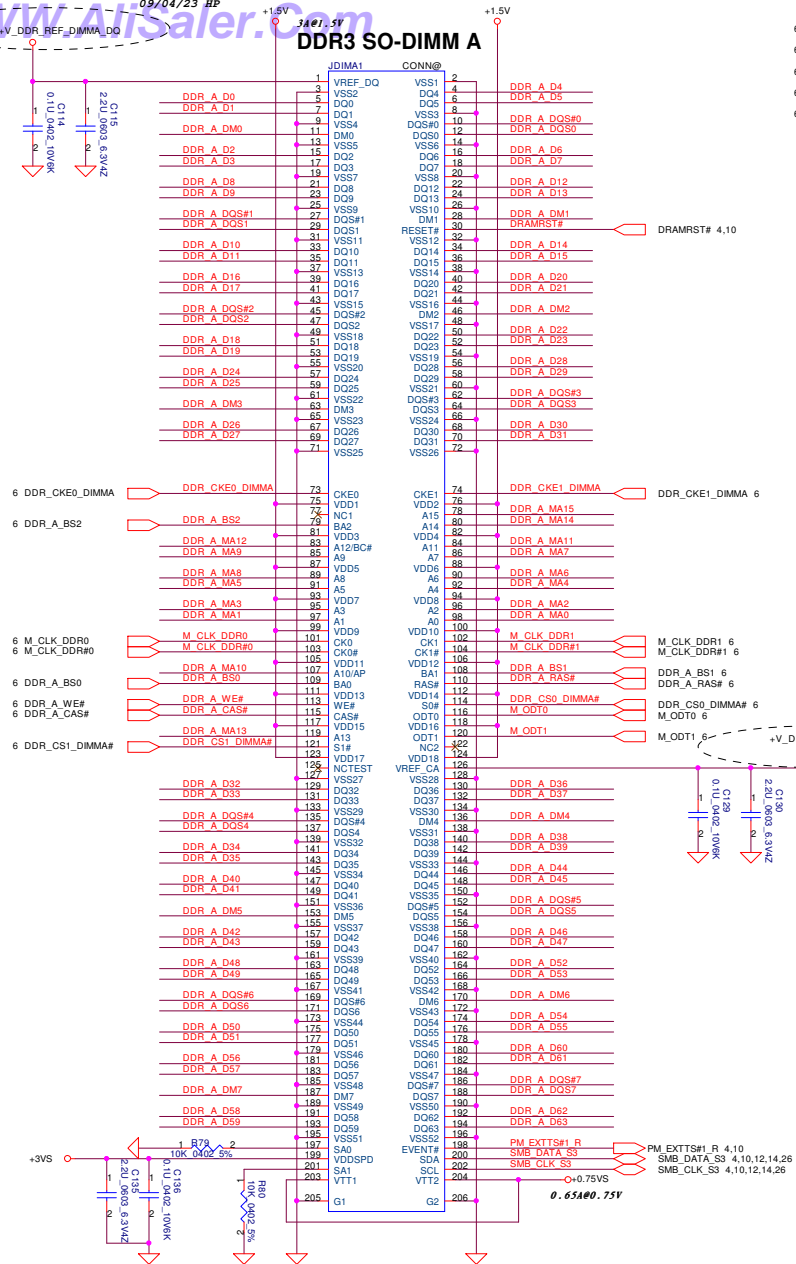
Security Classification		Compal Secret Data		Title	
Issued Date	2008/10/31	Deciphered Date	2009/11/06	Size	Document Number
THIS SHEET OF ENGINEERING DRAWING IS THE PROPRIETARY PROPERTY OF COMPAL ELECTRONICS, INC. AND CONTAINS CONFIDENTIAL AND TRADE SECRET INFORMATION. THIS SHEET MAY NOT BE TRANSFERRED FROM THE CUSTODY OF THE COMPETENT DIVISION OF R&D DEPARTMENT EXCEPT AS AUTHORIZED BY COMPAL ELECTRONICS, INC. NEITHER THIS SHEET NOR THE INFORMATION IT CONTAINS MAY BE USED BY OR DISCLOSED TO ANY THIRD PARTY WITHOUT PRIOR WRITTEN CONSENT OF COMPAL ELECTRONICS, INC.				Customer	LA-4892P
				Date:	Saturday, May 16, 2009
				Sheet	5 of 45



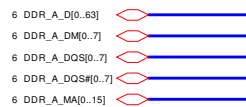
Security Classification		Compal Secret Data		Compal Electronics, Inc.	
Issued Date	2008/10/31	Deciphered Date	2009/11/06	Title	Auburndale(3/5)-DDR3
THIS SHEET OF ENGINEERING DRAWING IS THE PROPRIETARY PROPERTY OF COMPAL ELECTRONICS, INC. AND CONTAINS CONFIDENTIAL AND TRADE SECRET INFORMATION. THIS SHEET MAY NOT BE TRANSFERRED FROM THE CUSTODY OF THE COMPETENT DIVISION OF R&D DEPARTMENT EXCEPT AS AUTHORIZED BY COMPAL ELECTRONICS, INC. NEITHER THIS SHEET NOR THE INFORMATION IT CONTAINS MAY BE USED BY OR DISCLOSED TO ANY THIRD PARTY WITHOUT PRIOR WRITTEN CONSENT OF COMPAL ELECTRONICS, INC.				Size	Document Number
				Customer	LA-4892P
				Date	Saturday, May 16, 2009
				Sheet	6 of 45
				Rev	0.3



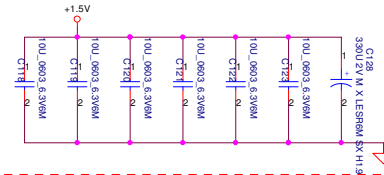
Security Classification		Compal Secret Data		Compal Electronics, Inc.	
Issued Date	2008/10/31	Deciphered Date	2009/11/06	Title	Auburndale(5/5)-GND/Bypass
THIS SHEET OF ENGINEERING DRAWING IS THE PROPRIETARY PROPERTY OF COMPAL ELECTRONICS, INC. AND CONTAINS CONFIDENTIAL AND TRADE SECRET INFORMATION. THIS SHEET MAY NOT BE TRANSFERRED FROM THE CUSTODY OF THE COMPETENT DIVISION OF R&D DEPARTMENT EXCEPT AS AUTHORIZED BY COMPAL ELECTRONICS, INC. NEITHER THIS SHEET NOR THE INFORMATION IT CONTAINS MAY BE USED BY OR DISCLOSED TO ANY THIRD PARTY WITHOUT PRIOR WRITTEN CONSENT OF COMPAL ELECTRONICS, INC.				Size	Document Number
				Customer	LA-4892P
				Date	Friday, May 15, 2009
				Sheet	8 of 45



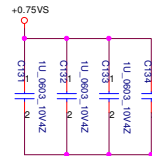
TOP SLOT



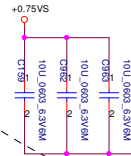
Layout Note:
Place near DIMM



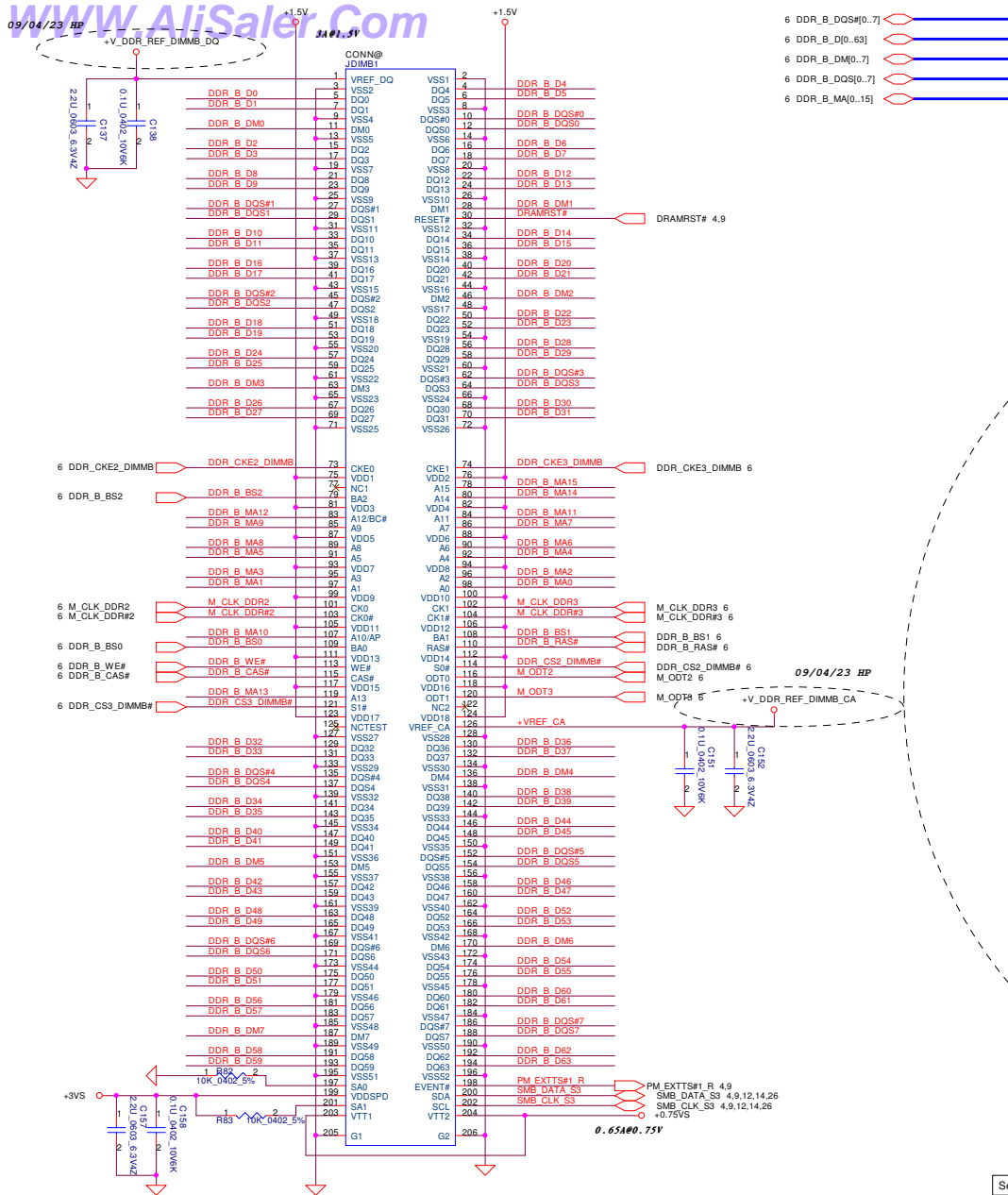
Layout Note:
Place near DIMM



Layout Note:
Shared between the two SO-DIMMs.
Place two capacitors close to the VR and one between the two SODIMMs



Security Classification		Compal Secret Data		Compal Electronics, Inc. DDRIII-SODIMM SLOT1	
Issued Date	2008/10/31	Deciphered Date	2009/11/06	Title	
THIS SHEET OF ENGINEERING DRAWING IS THE PROPRIETARY PROPERTY OF COMPAL ELECTRONICS, INC. AND CONTAINS CONFIDENTIAL AND TRADE SECRET INFORMATION. THIS SHEET MAY NOT BE TRANSFERRED FROM THE CUSTODY OF THE COMPETENT DIVISION OF R&D DEPARTMENT EXCEPT AS AUTHORIZED BY COMPAL ELECTRONICS, INC. NEITHER THIS SHEET NOR THE INFORMATION IT CONTAINS MAY BE USED BY OR DISCLOSED TO ANY THIRD PARTY WITHOUT PRIOR WRITTEN CONSENT OF COMPAL ELECTRONICS, INC.				Size Custom	Document Number LA-4892P
				Date:	Saturday, May 16, 2009
				Sheet	9 of 45
				Rev	0.3



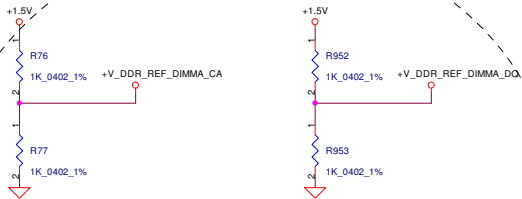
BOT SLOT

Layout Note:
Place near DIMM

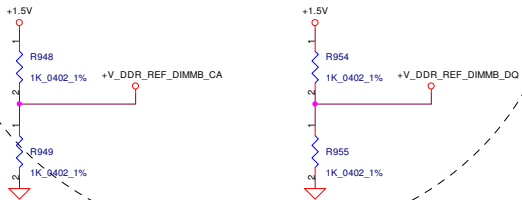
Layout Note:
Place near E

Security Classification	Compal Secret Data			Compal Electronics, Inc.		
Issued Date	2008/10/31	Deciphered Date	2009/11/06	Title	DDRIII-SODIMM SLOT2	
THIS SHEET OF ENGINEERING DRAWING IS THE PROPRIETARY PROPERTY OF COMPAL ELECTRONICS, INC. AND CONTAINS CONFIDENTIAL AND TRADE SECRET INFORMATION. THIS SHEET MAY NOT BE TRANSFERRED FROM THE CUSTODY OF THE COMPETENT DIVISION OF R&D DEPARTMENT EXCEPT AS AUTHORIZED BY COMPAL ELECTRONICS, INC. NEITHER THIS SHEET NOR THE INFORMATION IT CONTAINS MAY BE USED BY OR DISCLOSED TO ANY THIRD PARTY WITHOUT PRIOR WRITTEN CONSENT OF COMPAL ELECTRONICS, INC.				Size	Document Number	Rev
					LA-4892P	0.3
Date:		Saturday, May 16, 2009		Sheet	10 of 45	

09/04/03 Auburndale/Arrandale only supports M1 change Vref to +V_DDR_CPU_REF



09/04/23 HP



11/20 HP

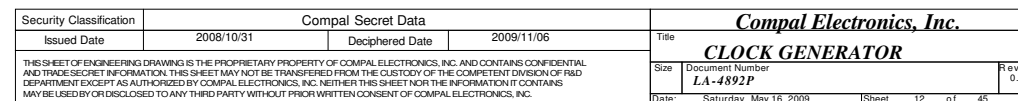
09/03/31 Auburndale/Arrandale only supports M1, HP

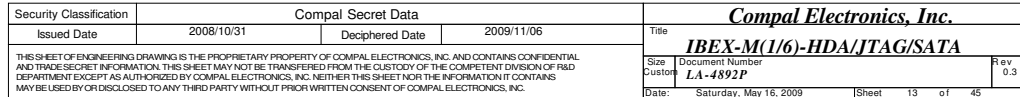
11/20 HP

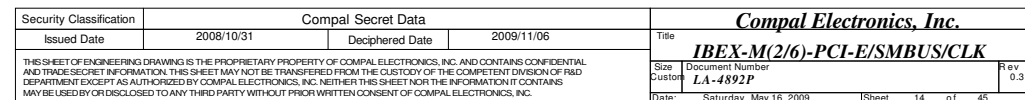
09/03/31 Auburndale/Arrandale only supports M1, HP

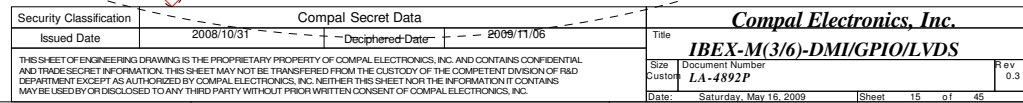
11/20 Auburndale does not require to support M2 for VrefDQ, HP

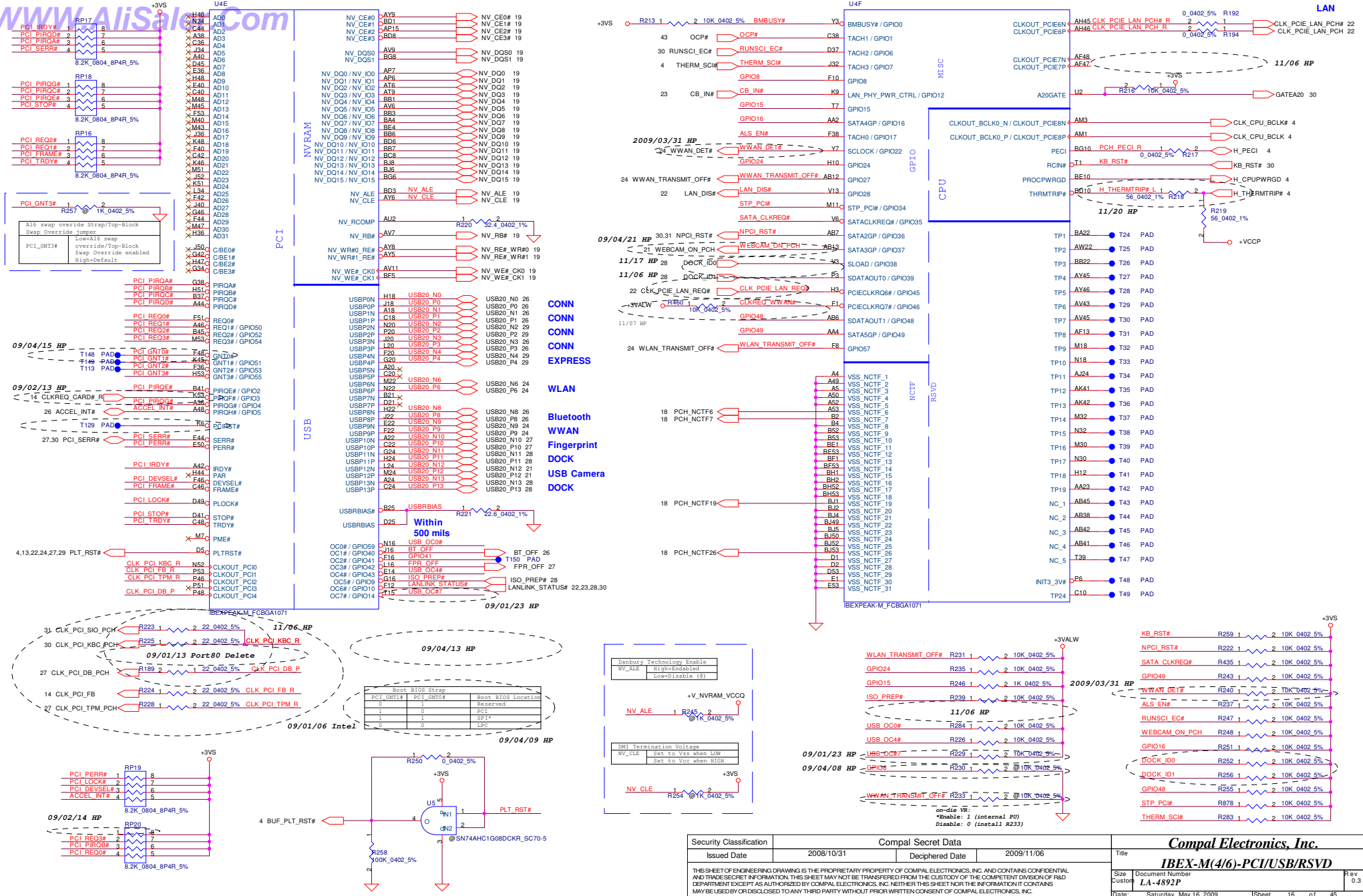
Security Classification	Compal Secret Data			Compal Electronics, Inc.	
Issued Date	2008/09/15	Deciphered Date	2009/11/06	DDRIII SO-DIMM VREFDQ (M1/M2/M3)	
THIS SHEET OF ENGINEERING DRAWING IS THE PROPRIETARY PROPERTY OF COMPAL ELECTRONICS, INC. AND CONTAINS CONFIDENTIAL AND TRADE SECRET INFORMATION. THIS SHEET MAY NOT BE TRANSFERRED FROM THE CUSTODY OF THE COMPETENT DIVISION OF R&D DEPARTMENT EXCEPT AS AUTHORIZED BY COMPAL ELECTRONICS, INC. NEITHER THIS SHEET NOR THE INFORMATION IT CONTAINS MAY BE REPRODUCED OR DISCLOSED TO ANY THIRD PARTY WITHOUT PRIOR WRITTEN CONSENT OF COMPAL ELECTRONICS, INC.				Size Customer	Rev. 0.3
				Date: Friday, May 15, 2009	Sheet 11 of 45

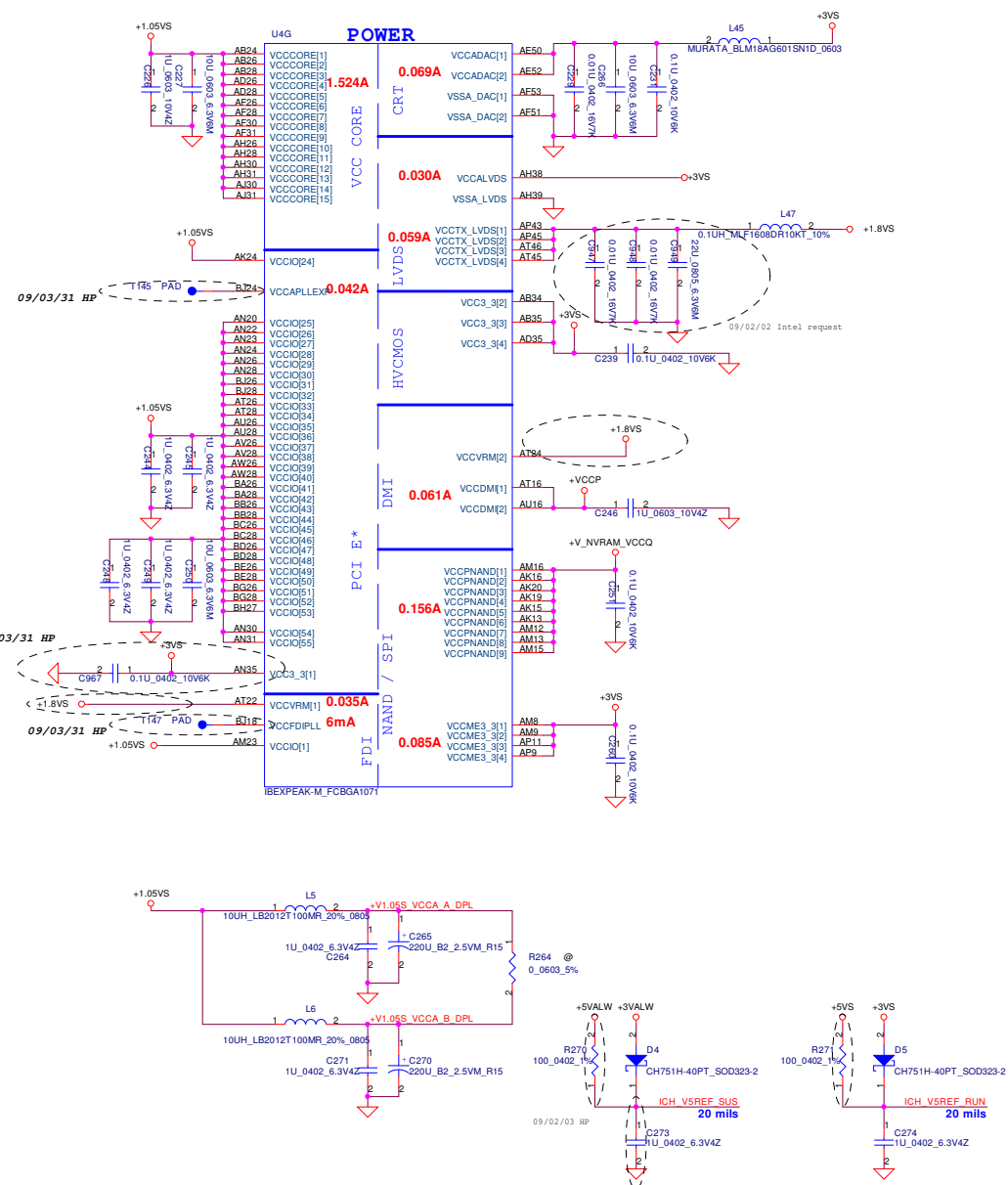
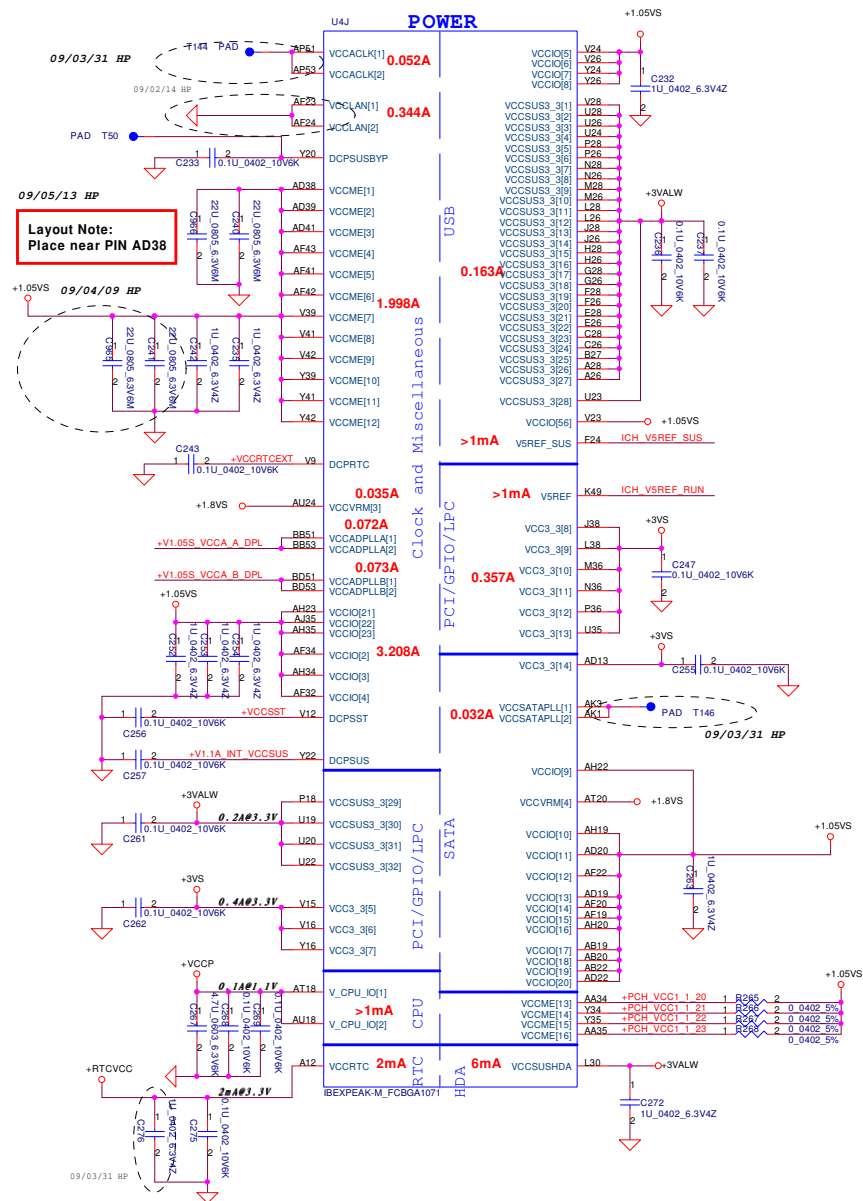




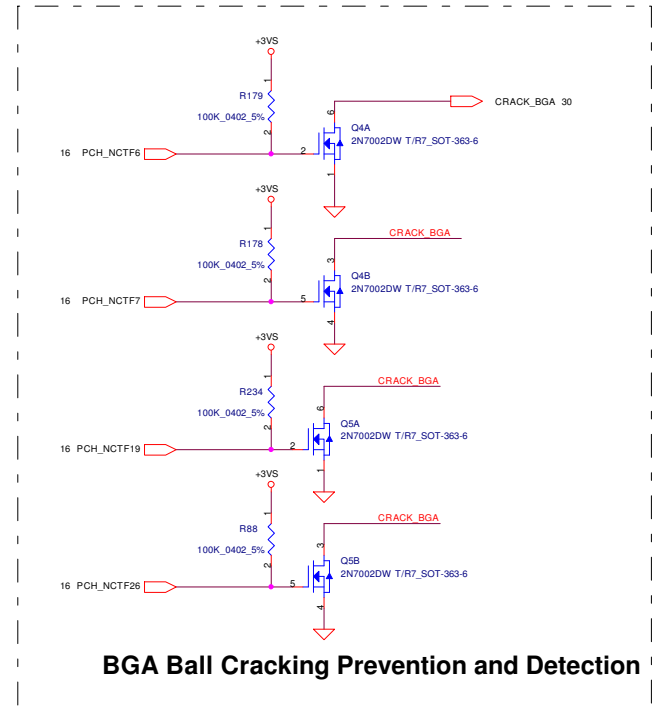
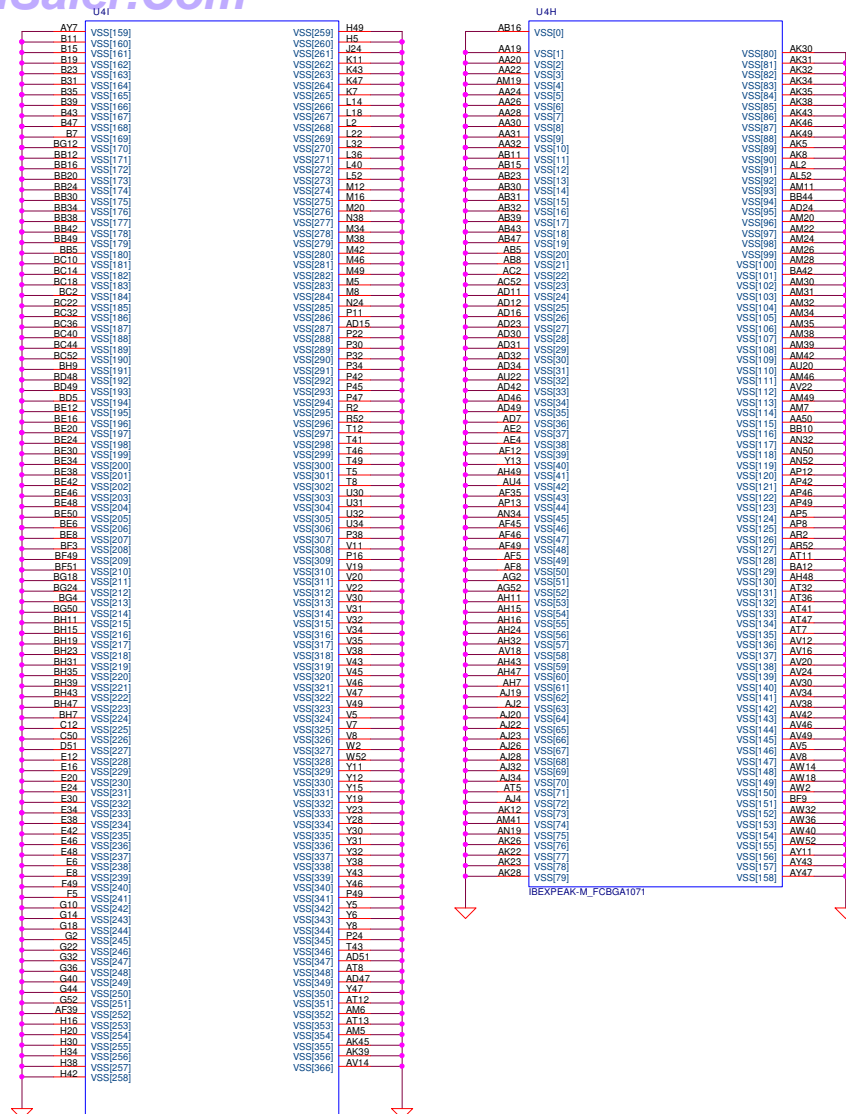




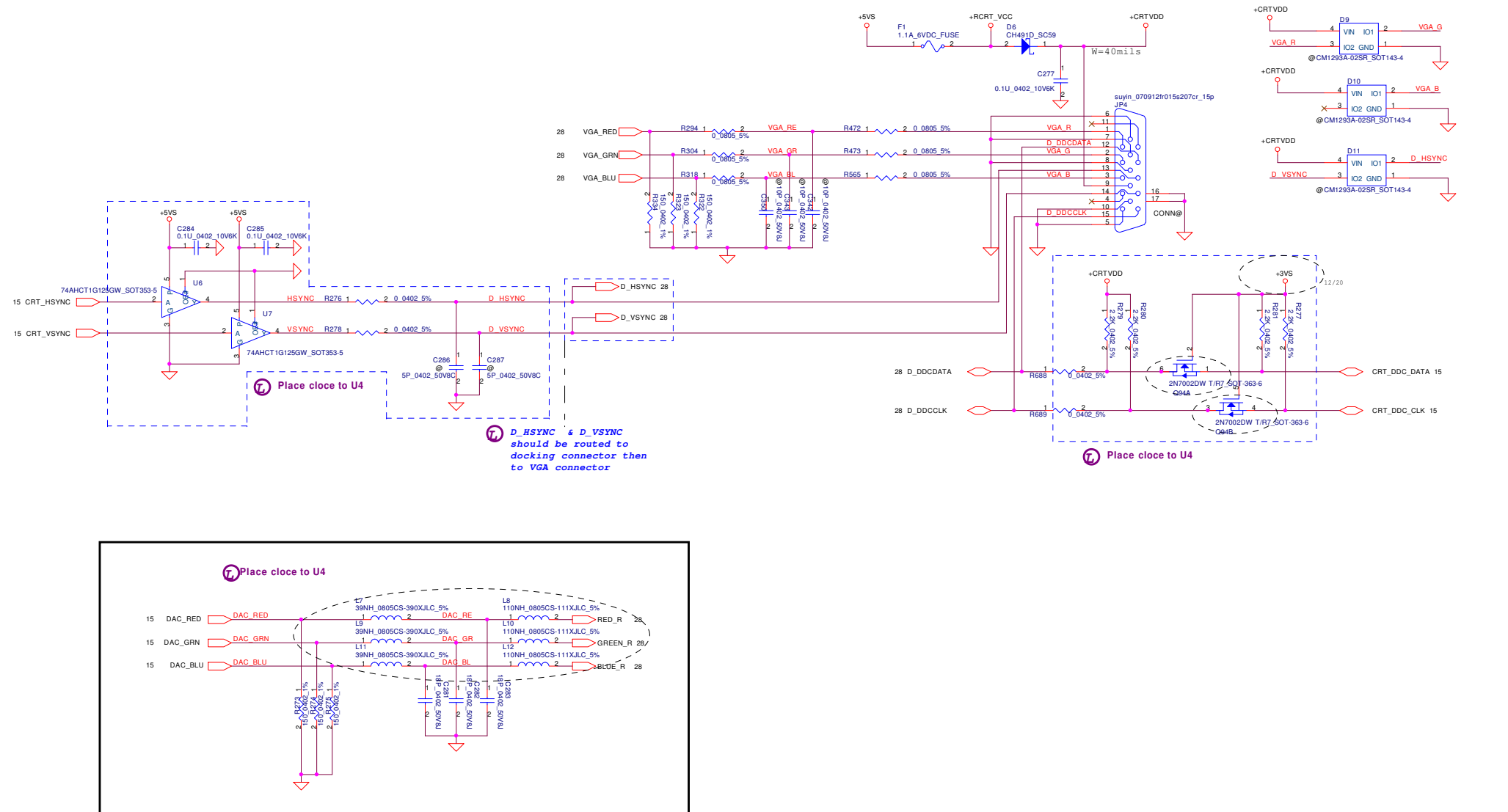




Security Classification	Compal Secret Data			<i>Compal Electronics, Inc.</i>		
Issued Date	2008/10/31	Deciphered Date	2009/11/06	Title <i>IBEX-M(5/6)-PWR</i>		
THIS SECRET OF ENGINEERING DRAWING IS THE PROPRIETARY PROPERTY OF COMPAL ELECTRONICS, INC. AND CONTAINS CONFIDENTIAL AND TRADE SECRET INFORMATION. THIS SHEET MAY NOT BE TRANSFERRED FROM THE CUSTODY OF THE COMPETENT DIVISION OF R&D DEPARTMENT EXCEPT AS AUTHORIZED BY COMPAL ELECTRONICS, INC. NEITHER THIS SHEET NOR THE INFORMATION IT CONTAINS MAY BE USED BY OR DISCLOSED TO ANY THIRD PARTY WITHOUT PRIOR WRITTEN CONSENT OF COMPAL ELECTRONICS, INC.				Size	Document Number	Rev
				Date	LA-4892P	0.1
				Created	Friday, May 15, 2009	Sheet 17 of 45

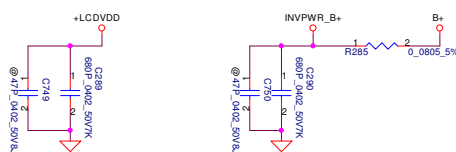
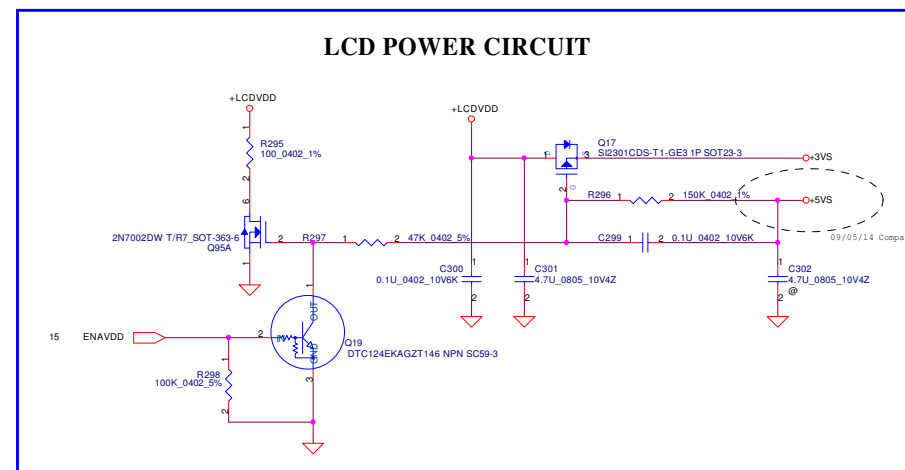
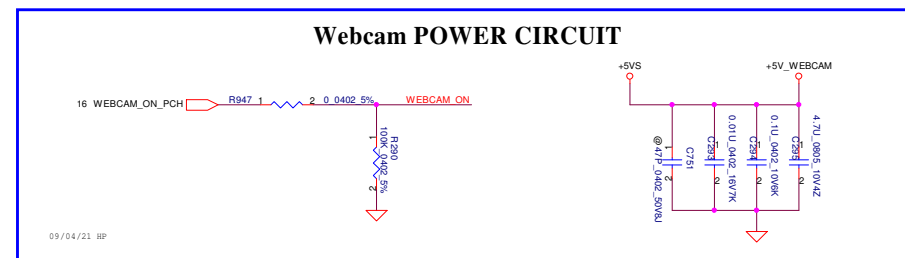
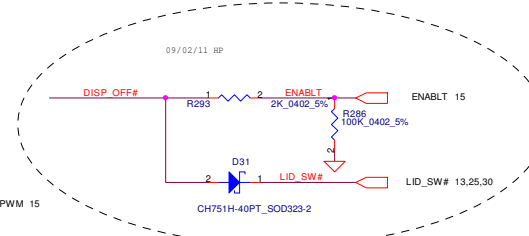
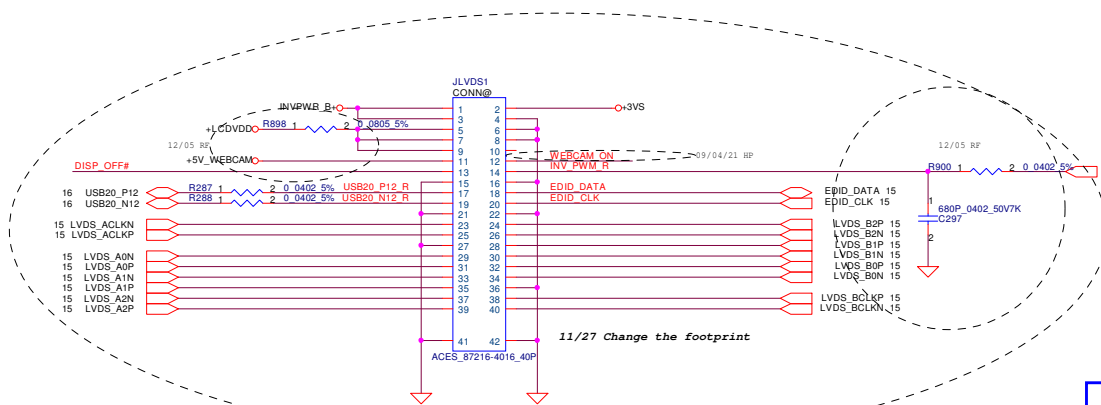


Security Classification		Compal Secret Data		Compal Electronics, Inc.	
Issued Date	2008/10/31	Deciphered Date	2009/11/06	Title	IBEX-M(6/6)-GND
THIS SHEET OF ENGINEERING DRAWING IS THE PROPRIETARY PROPERTY OF COMPAL ELECTRONICS, INC. AND CONTAINS CONFIDENTIAL AND TRADE SECRET INFORMATION. THIS SHEET MAY NOT BE TRANSFERRED FROM THE CUSTODY OF THE COMPETENT DIVISION OF R&D DEPARTMENT EXCEPT AS AUTHORIZED BY COMPAL ELECTRONICS, INC. NEITHER THIS SHEET NOR THE INFORMATION IT CONTAINS MAY BE USED BY OR DISCLOSED TO ANY THIRD PARTY WITHOUT PRIOR WRITTEN CONSENT OF COMPAL ELECTRONICS, INC.				Size	Document Number
				Customer	LA-4892P
				Date	Saturday, May 16, 2009
				Sheet	18 of 45



Security Classification	Compal Secret Data		Compal Electronics, Inc.	
Issued Date	2008/10/31	Deciphered Date	2009/11/06	Title
THIS SHEET OF ENGINEERING DRAWING IS THE PROPRIETARY PROPERTY OF COMPAL ELECTRONICS, INC. AND CONTAINS CONFIDENTIAL AND TRADE SECRET INFORMATION. THIS SHEET MAY NOT BE TRANSFERRED FROM THE CUSTODY OF THE COMPETENT DIVISION OF R&D DEPARTMENT EXCEPT AS AUTHORIZED BY COMPAL ELECTRONICS, INC. NEITHER THIS SHEET NOR THE INFORMATION IT CONTAINS MAY BE USED BY OR DISCLOSED TO ANY THIRD PARTY WITHOUT PRIOR WRITTEN CONSENT OF COMPAL ELECTRONICS, INC.				Size
				Document Number
				LA-4892P
				Rev
				0.3
				Date
				Saturday, May 16, 2009
				Sheet
				20 of 45

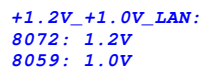
LCD/PANEL BD. CONN.



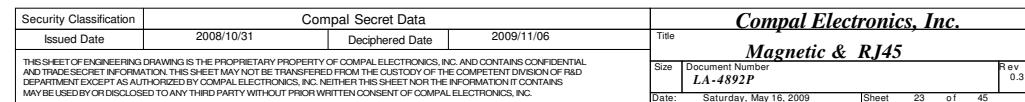
For CCFL only

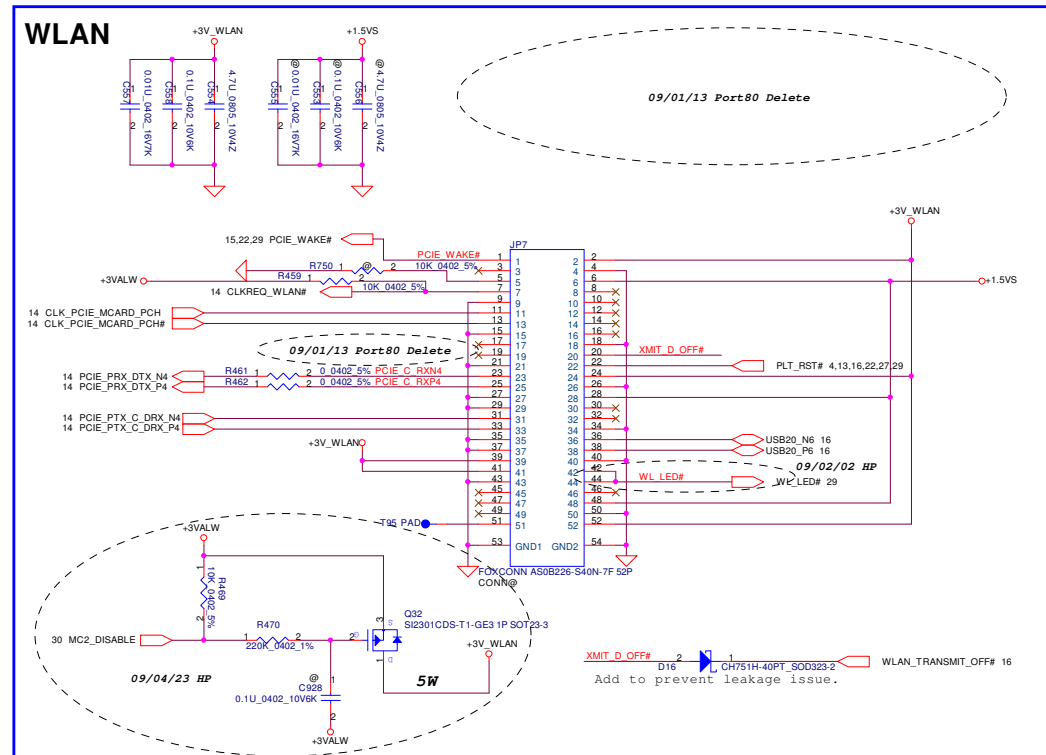
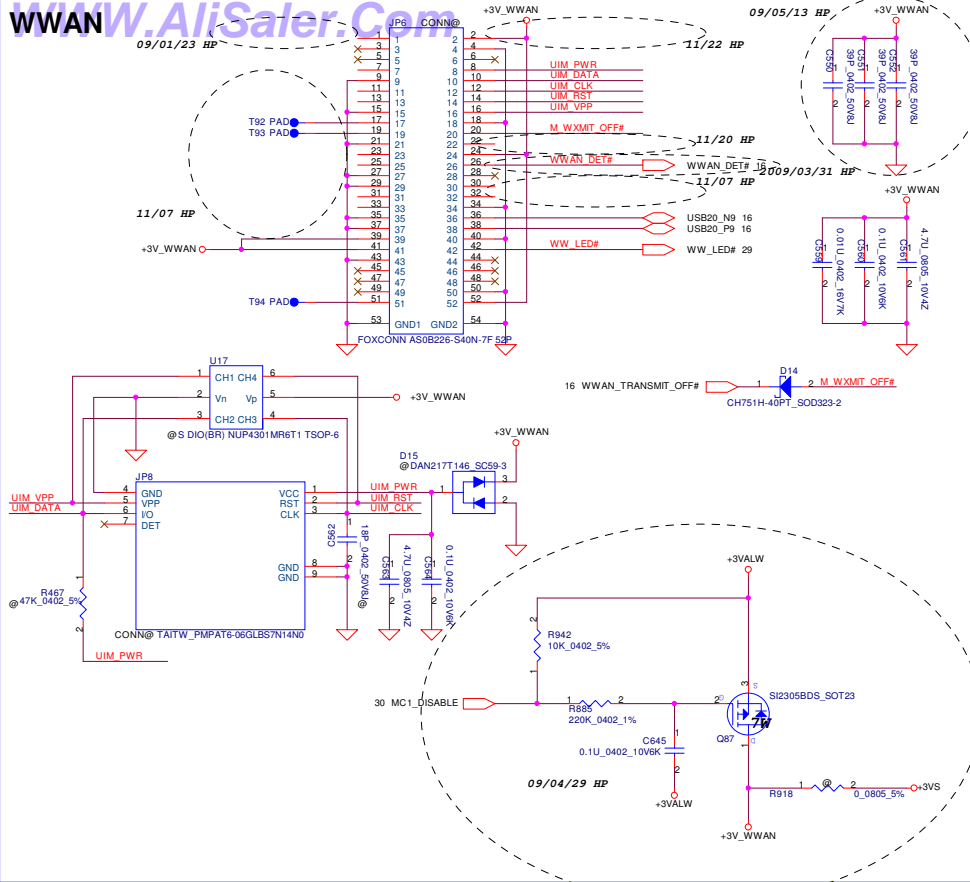
09/04/13 HP

Security Classification		Compal Secret Data		Title	
Issued Date	2008/10/31	Deciphered Date	2009/11/06	Size	Document Number
THIS SHEET OF ENGINEERING DRAWING IS THE PROPRIETARY PROPERTY OF COMPAL ELECTRONICS, INC. AND CONTAINS CONFIDENTIAL AND TRADE SECRET INFORMATION. THIS SHEET MAY NOT BE TRANSFERRED FROM THE CUSTODY OF THE COMPETENT DIVISION OF R&D DEPARTMENT EXCEPT AS AUTHORIZED BY COMPAL ELECTRONICS, INC. NEITHER THIS SHEET NOR THE INFORMATION IT CONTAINS MAY BE USED BY OR DISCLOSED TO ANY THIRD PARTY WITHOUT PRIOR WRITTEN CONSENT OF COMPAL ELECTRONICS, INC.				LA-4892P	Rev 0.3
				Date:	Saturday, May 16, 2009
				Sheet	21 of 45

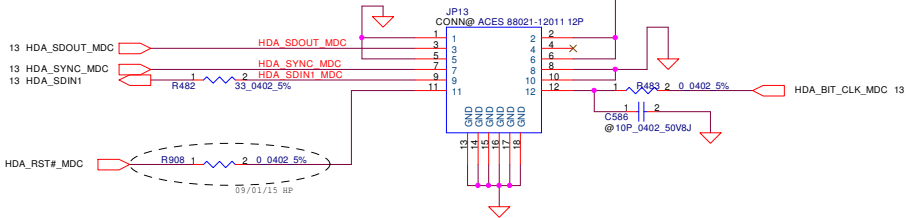
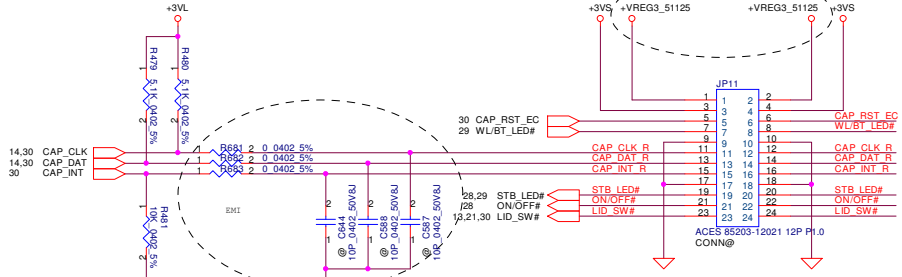


Security Classification		Compal Secret Data		Compal Electronics, Inc. Giga LAN 88E8059/88E8072	
Issued Date	2008/10/31	Deciphered Date	2009/11/06	Title	
THIS SHEET OF ENGINEERING DRAWING IS THE PROPRIETARY PROPERTY OF COMPAL ELECTRONICS, INC. AND CONTAINS CONFIDENTIAL AND TRADE SECRET INFORMATION. THIS SHEET MAY NOT BE TRANSFERRED FROM THE CUSTODY OF THE COMPETENT DIVISION OF R&D DEPARTMENT EXCEPT AS AUTHORIZED BY COMPAL ELECTRONICS, INC. NEITHER THIS SHEET NOR THE INFORMATION IT CONTAINS MAY BE USED BY OR DISCLOSED TO ANY THIRD PARTY WITHOUT PRIOR WRITTEN CONSENT OF COMPAL ELECTRONICS, INC.				Size	Document Number
					LA-4892P
				Date:	Saturday, May 16, 2009
				Sheet	22 of 45
				Rev	0.3

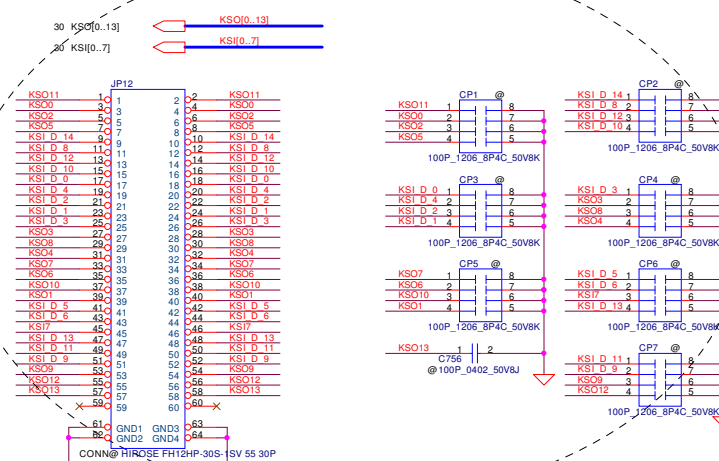




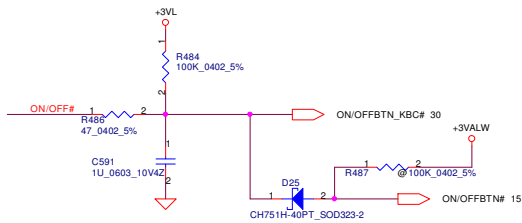
Security Classification		Compal Secret Data		Compal Electronics, Inc.		
Issued Date	2008/10/31	Deciphered Date	2009/11/06	Title WWAN/NAND mini		
THIS SHEET OF ENGINEERING DRAWING IS THE PROPRIETARY PROPERTY OF COMPAL ELECTRONICS, INC. AND CONTAINS CONFIDENTIAL AND TRADE SECRET INFORMATION. THIS SHEET MAY NOT BE TRANSFERRED FROM THE CUSTODY OF THE COMPETENT DIVISION OF R&D DEPARTMENT EXCEPT AS AUTHORIZED BY COMPAL ELECTRONICS, INC. NEITHER THIS SHEET NOR THE INFORMATION IT CONTAINS MAY BE USED BY OR DISCLOSED TO ANY THIRD PARTY WITHOUT PRIOR WRITTEN CONSENT OF COMPAL ELECTRONICS, INC.				Size	Document Number	Rev
					LA-4892P	0.3
				Date:	Saturday, May 16, 2009	Sheet 24 of 45



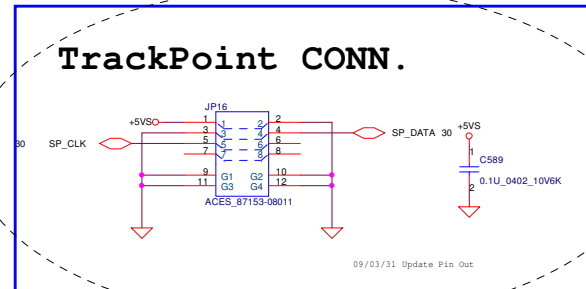
```
INT_KBD  CONN.
```



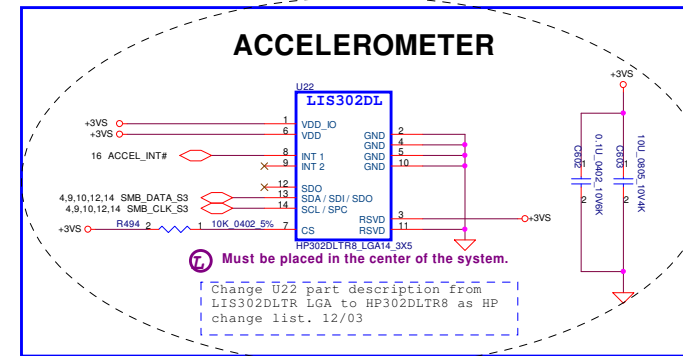
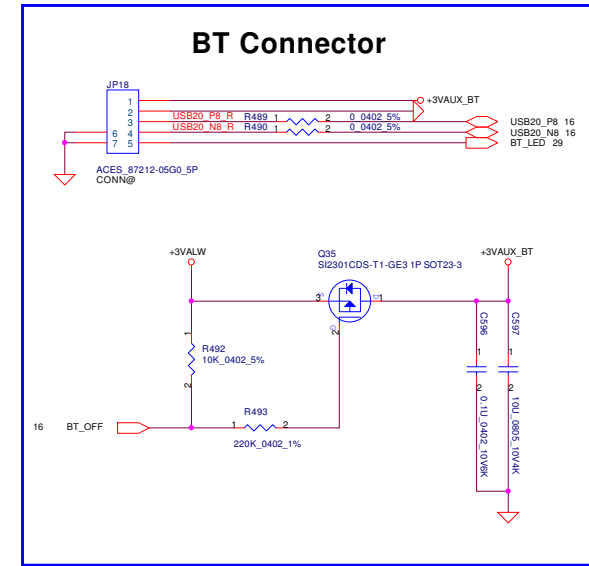
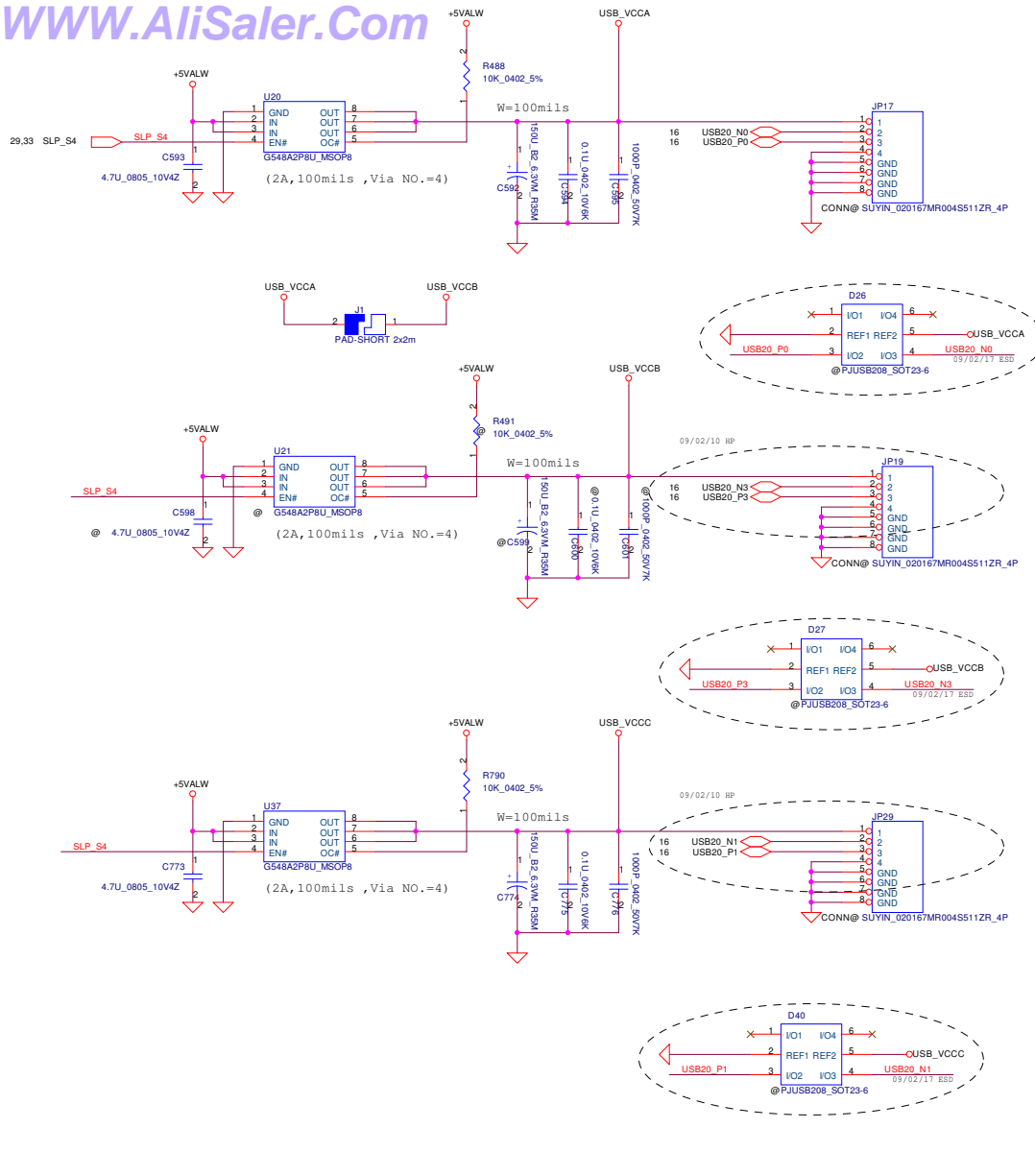
Power button



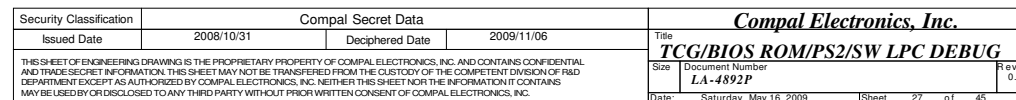
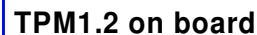
```
TrackPoint CONN.
```



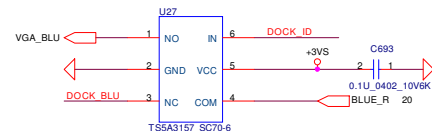
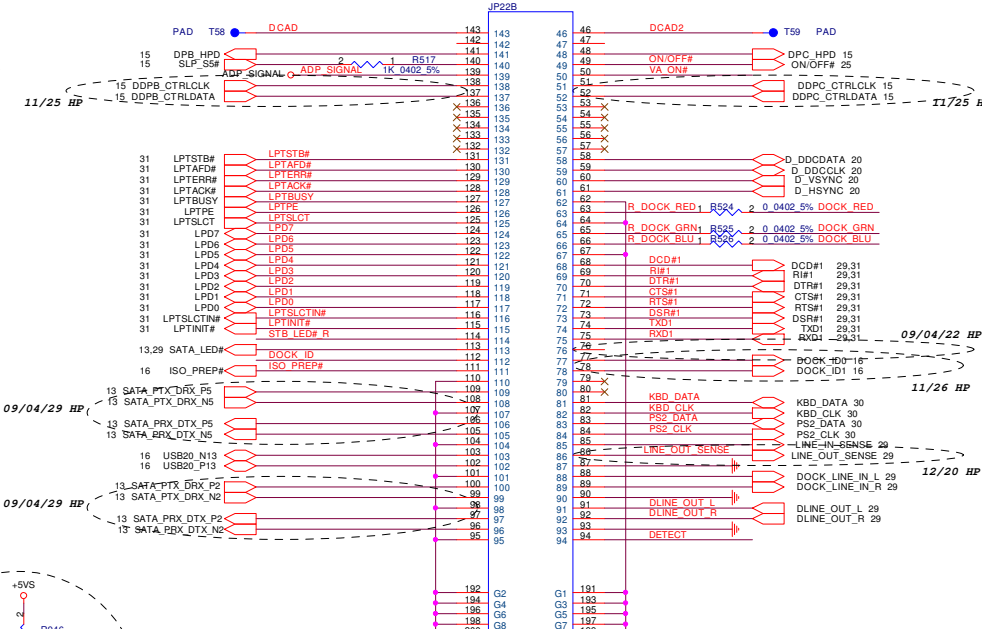
Security Classification	Compal Secret Data			Compal Electronics, Inc.		
Issued Date	2008/10/31	Deciphered Date	2009/11/06	Title	MDC/KBD/ON OFF/LID	
THIS SHEET OF ENGINEERING DRAWING IS THE PROPRIETARY PROPERTY OF COMPAL ELECTRONICS, INC. AND CONTAINS CONFIDENTIAL AND TRADE SECRET INFORMATION. THIS SHEET MAY NOT BE TRANSFERRED FROM THE CUSTODY OF THE COMPETENT DIVISION OF R&D DEPARTMENT EXCEPT AS AUTHORIZED BY COMPAL ELECTRONICS, INC. NEITHER THIS SHEET NOR THE INFORMATION IT CONTAINS MAY BE USED BY OR DISCLOSED TO ANY THIRD PARTY WITHOUT PRIOR WRITTEN CONSENT OF COMPAL ELECTRONICS, INC.				Size	Document Number LA-4892P	Rev 0.3
				Date:	Saturday, May 16, 2009	Sheet 25 of 45



Security Classification		Compal Secret Data		Title	
Issued Date		Deciphered Date		2009/11/06	
2008/10/31		2009/11/06		Compal Electronics, Inc.	
THIS SHEET OF ENGINEERING DRAWING IS THE PROPRIETARY PROPERTY OF COMPAL ELECTRONICS, INC. AND CONTAINS CONFIDENTIAL AND TRADE SECRET INFORMATION. THIS SHEET MAY NOT BE TRANSFERRED FROM THE CUSTODY OF THE COMPETENT DIVISION OF R&D DEPARTMENT EXCEPT AS AUTHORIZED BY COMPAL ELECTRONICS, INC. NEITHER THIS SHEET NOR THE INFORMATION IT CONTAINS MAY BE USED BY OR DISCLOSED TO ANY THIRD PARTY WITHOUT PRIOR WRITTEN CONSENT OF COMPAL ELECTRONICS, INC.		Document Number		USB & BT Connector & Accelerometer	
Size		LA-4892P		Rev 0.3	
Date		Saturday, May 16, 2009		Sheet 26 of 45	

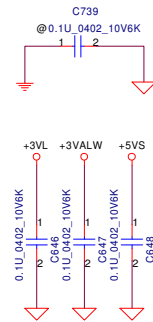
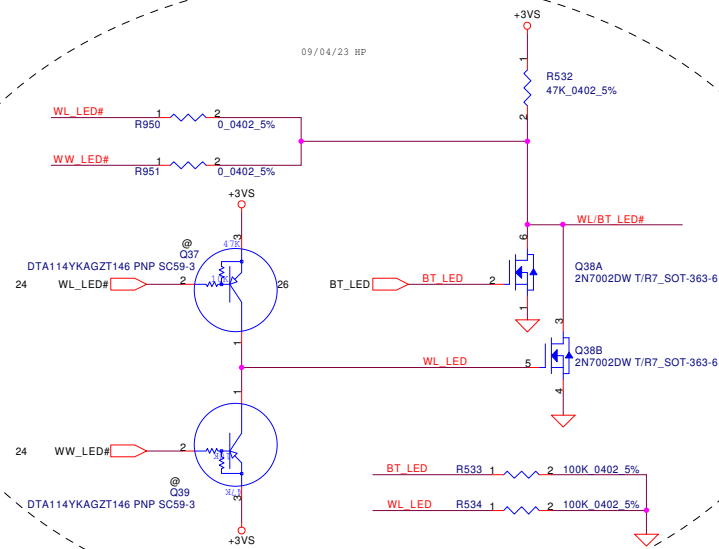
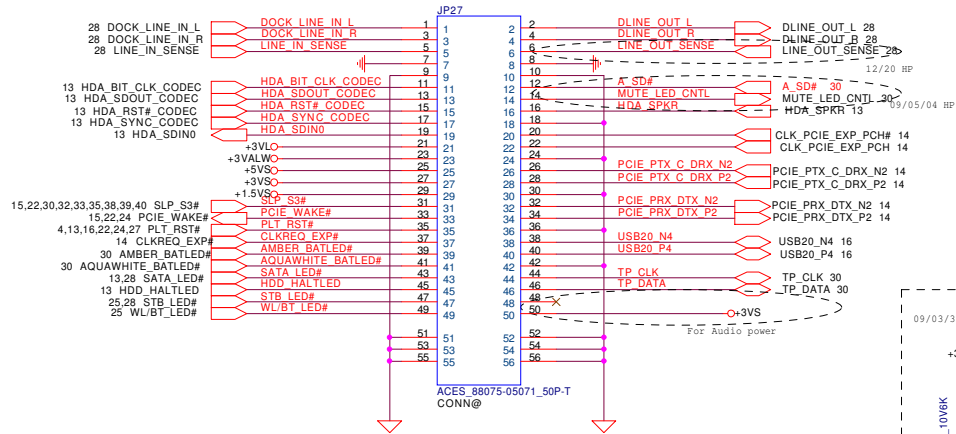


-

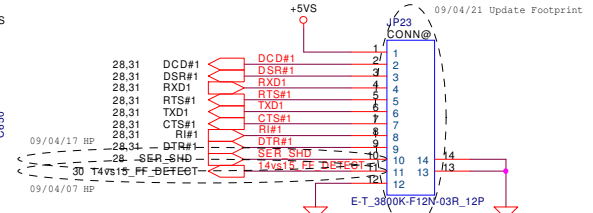


Security Classification	Compal Secret Data			Compal Electronics, Inc. DOCK CONN		
Issued Date	2008/10/31	Deciphered Date	2009/11/06	Title		
THIS SHEET OF ENGINEERING DRAWING IS THE PROPRIETARY PROPERTY OF COMPAL ELECTRONICS, INC. AND CONTAINS CONFIDENTIAL AND TRADE SECRET INFORMATION. THIS SHEET MAY NOT BE TRANSFERRED FROM THE CUSTODY OF THE COMPETENT DIVISION OF R&D DEPARTMENT EXCEPT AS AUTHORIZED BY COMPAL ELECTRONICS, INC. NEITHER THIS SHEET NOR THE INFORMATION IT CONTAINS MAY BE USED OR DISCLOSED TO ANY THIRD PARTY WITHOUT PRIOR WRITTEN CONSENT OF COMPAL ELECTRONICS, INC.				Size	Document Number	Rev
				Custom	LA-4892P	0.3
				Date:	Saturday, May 16, 2009	Sheet 28 of 45

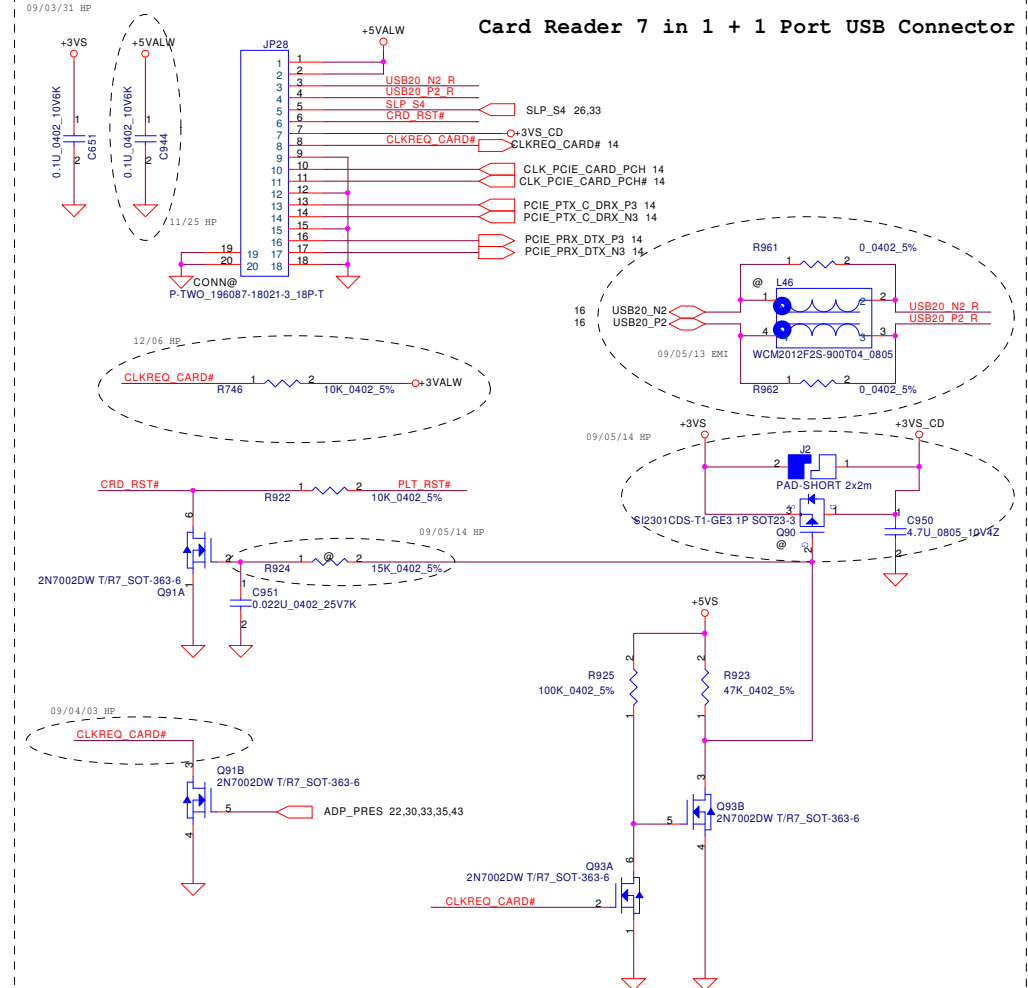
Audio/Express Card/TP/LEDs Connector



Serial Port CONN



Card Reader 7 in 1 + 1 Port USB Connector



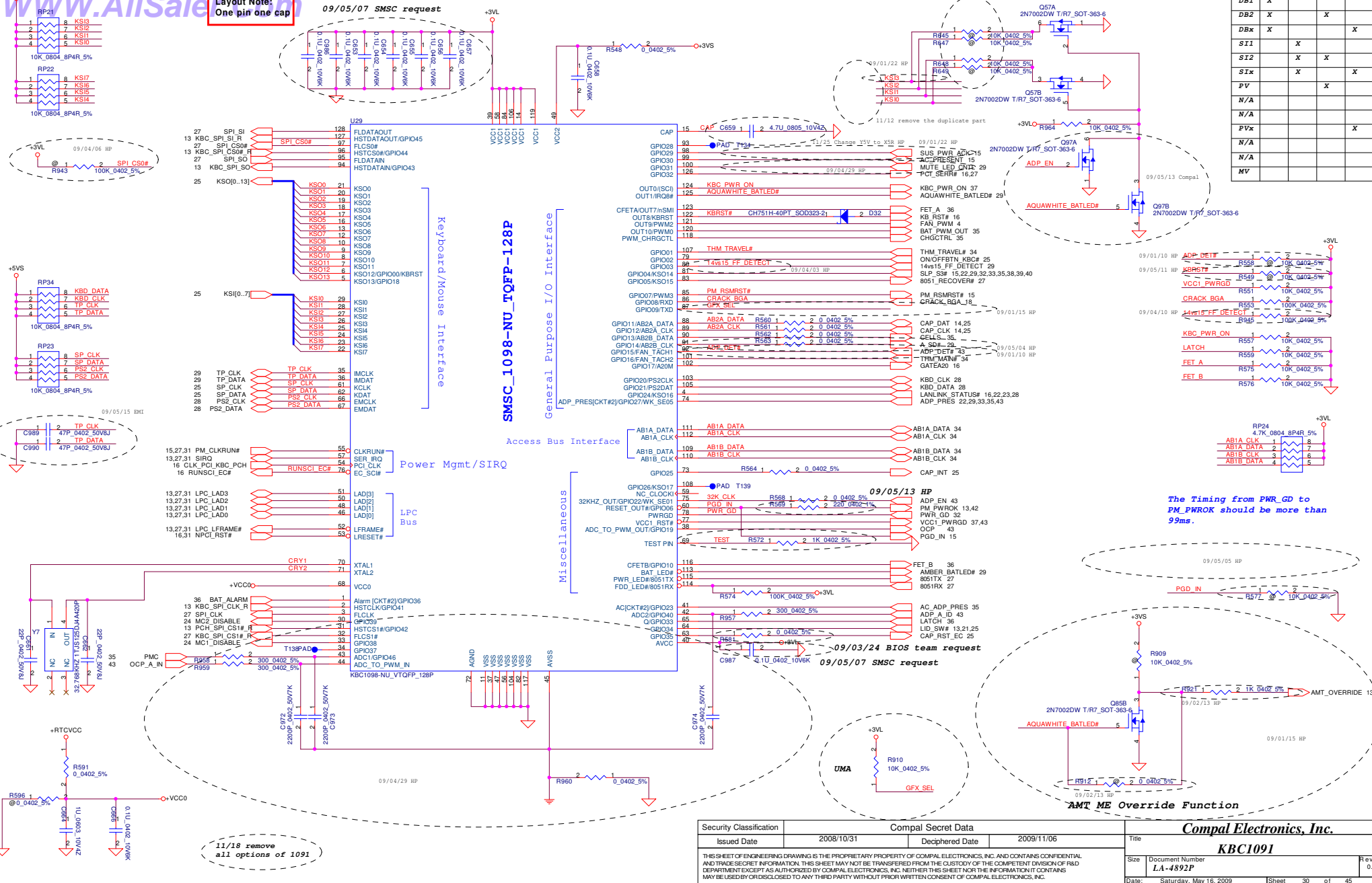
Security Classification		Compal Secret Data		Compal Electronics, Inc.	
Issued Date	2008/10/31	Deciphered Date	2009/11/06	Title	CR&LEDs&PW&Audio&Exp Conn
THIS SHEET OF ENGINEERING DRAWING IS THE PROPRIETARY PROPERTY OF COMPAL ELECTRONICS, INC. AND CONTAINS CONFIDENTIAL AND TRADE SECRET INFORMATION. THIS SHEET MAY NOT BE TRANSFERRED FROM THE CUSTODY OF THE COMPETENT DIVISION OF R&D DEPARTMENT EXCEPT AS AUTHORIZED BY COMPAL ELECTRONICS, INC. NEITHER THIS SHEET NOR THE INFORMATION IT CONTAINS MAY BE USED BY OR DISCLOSED TO ANY THIRD PARTY WITHOUT PRIOR WRITTEN CONSENT OF COMPAL ELECTRONICS, INC.				Size	Document Number
				Custom	LA-4892P
				Date:	Saturday, May 16, 2009
				Sheet	29 of 45

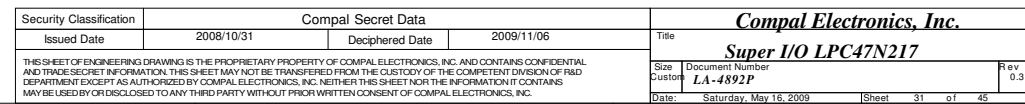
Layout Note:
One pin one cap

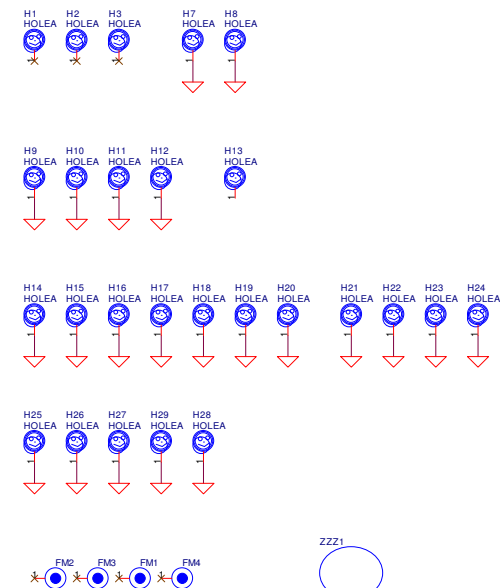
09/05/07 SMC request

System Board ID Detect

ID	R649	R648	R647	R645
DB1	X			
DB2	X		X	
DBx	X			X
SI1		X		
SI2		X	X	
SIx		X	X	
PV			X	
N/A				
N/A				
PVx				X
N/A				
N/A				
MV				

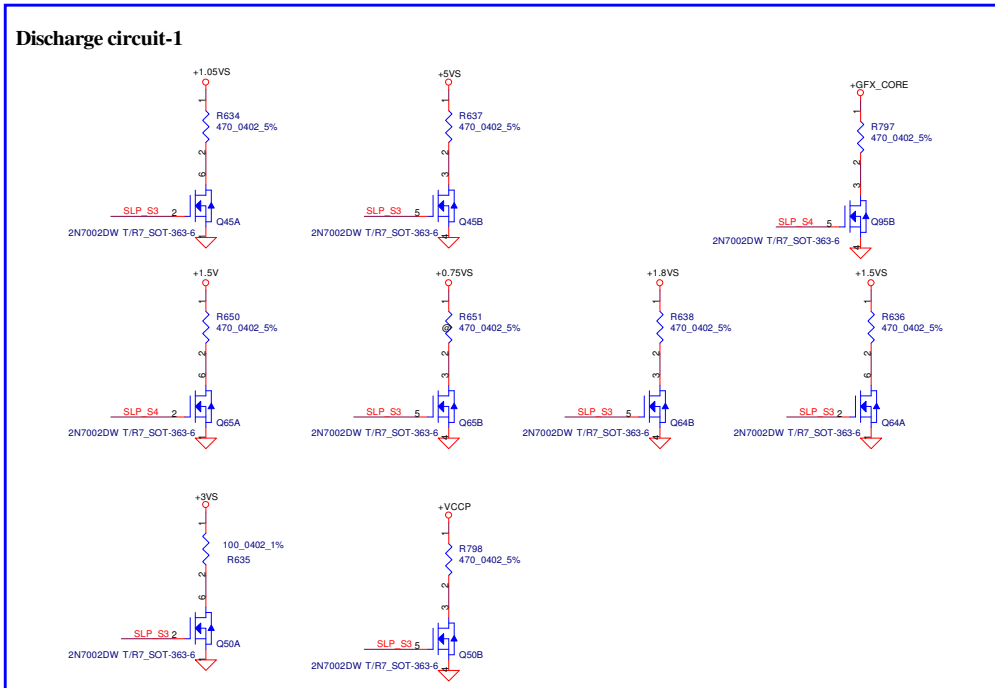




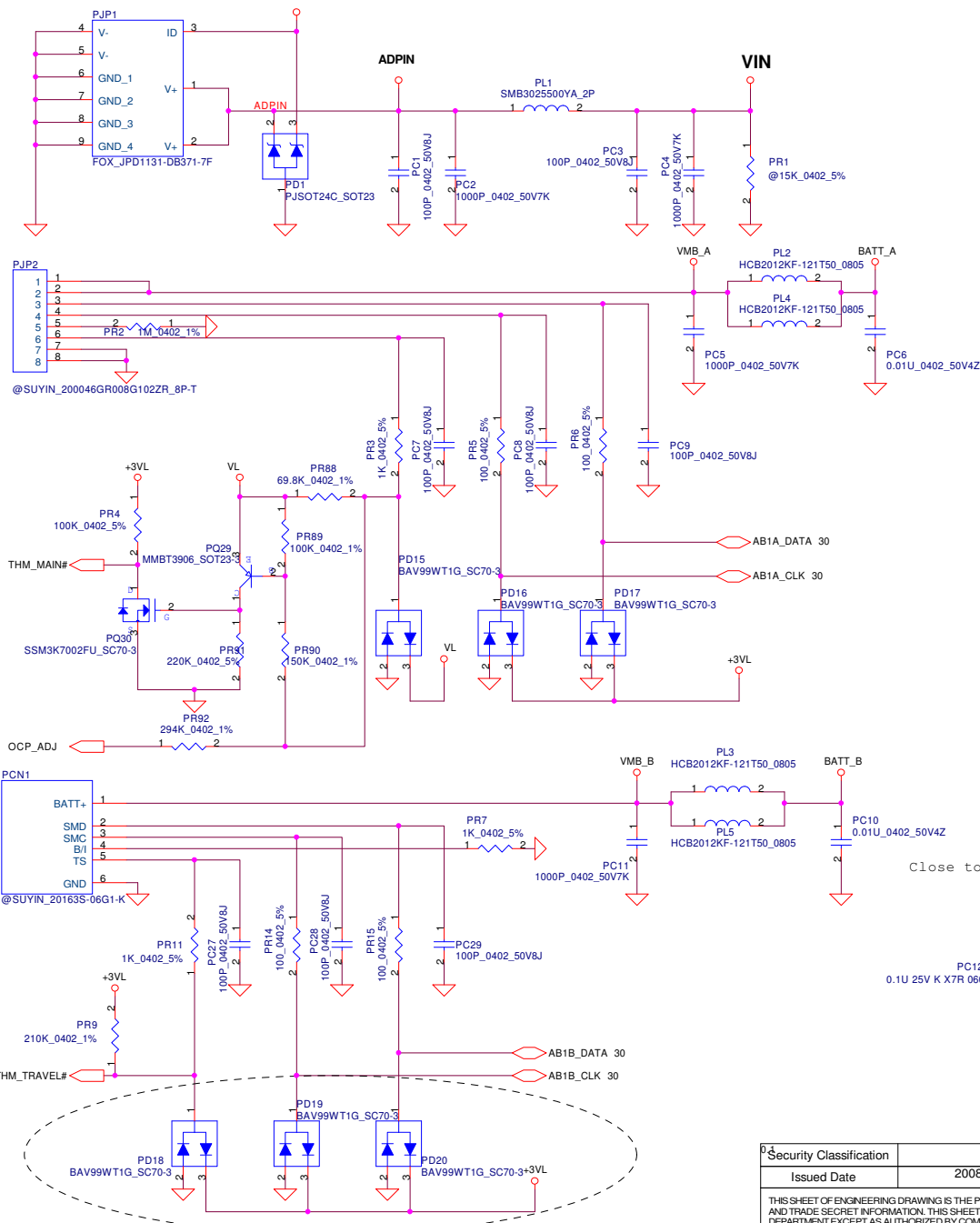


Security Classification	Compal Secret Data			<i>Compal Electronics, Inc.</i>		
Issued Date	2008/10/31	Deciphered Date	2009/11/06			
THIS SHEET OF ENGINEERING DRAWING IS THE PROPRIETARY PROPERTY OF COMPAL ELECTRONICS, INC. AND CONTAINS CONFIDENTIAL AND TRADE SECRET INFORMATION. THIS SHEET MAY NOT BE TRANSFERRED FROM THE CUSTODY OF THE COMPETENT DIVISION OF R&D DEPARTMENT EXCEPT AS AUTHORIZED BY COMPAL ELECTRONICS, INC. NEITHER THIS SHEET NOR THE INFORMATION IT CONTAINS MAY BE USED BY OR DISCLOSED TO ANY THIRD PARTY WITHOUT PRIOR WRITTEN CONSENT OF COMPAL ELECTRONICS, INC.				Size	Document Number <i>LA-4892P</i>	Rev 0.3
				Date:	Saturday, May 16, 2009	Sheet 32 of 45

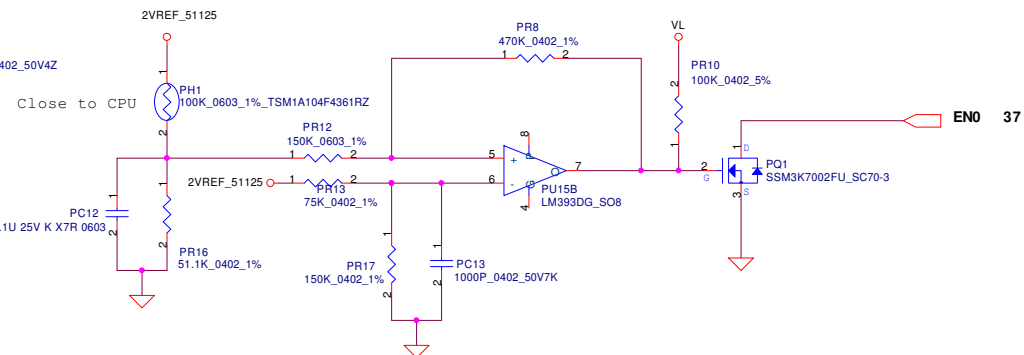
Security Classification	Compal Secret Data			<div style="text-align: right;"> Compal Electronics, Inc. DC/DC Circuits </div>		
Issued Date	2008/10/31	Deciphered Date	2009/11/06			
THIS SHEET OF ENGINEERING DRAWING IS THE PROPRIETARY PROPERTY OF COMPAL ELECTRONICS, INC. AND CONTAINS CONFIDENTIAL AND TRADE SECRET INFORMATION. THIS SHEET MAY NOT BE TRANSFERRED FROM THE CUSTODY OF THE COMPETENT DIVISION OF R&D DEPARTMENT EXCEPT AS AUTHORIZED BY COMPAL ELECTRONICS, INC. NEITHER THIS SHEET NOR THE INFORMATION IT CONTAINS MAY BE USED BY OR DISCLOSED TO ANY THIRD PARTY WITHOUT PRIOR WRITTEN CONSENT OF COMPAL ELECTRONICS, INC.				Size	Document Number LA-4892P	Rev 0.3
				Date:	Saturday, May 16, 2009	Sheet 33 of 45



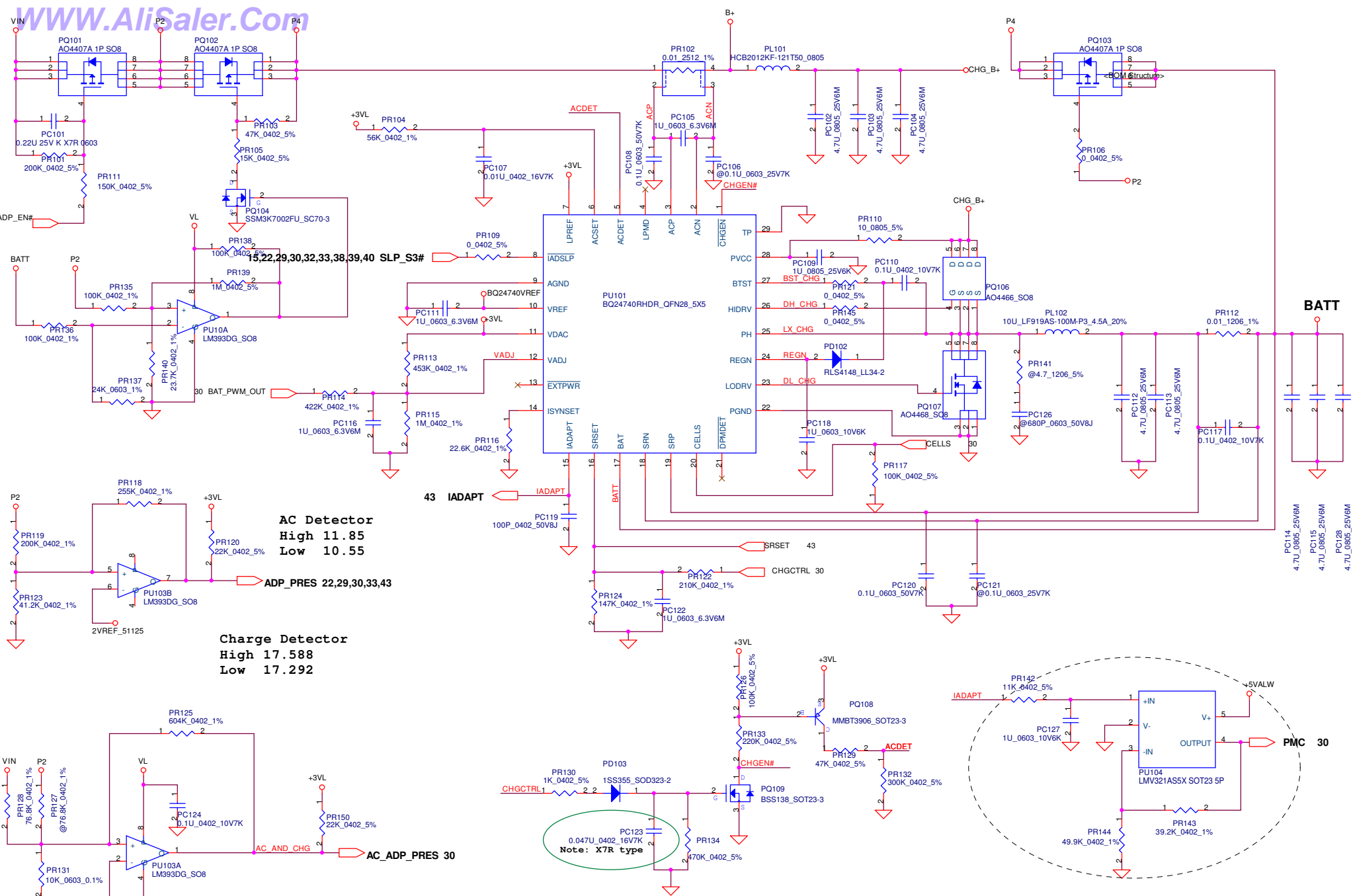
ADP_SIGNAL



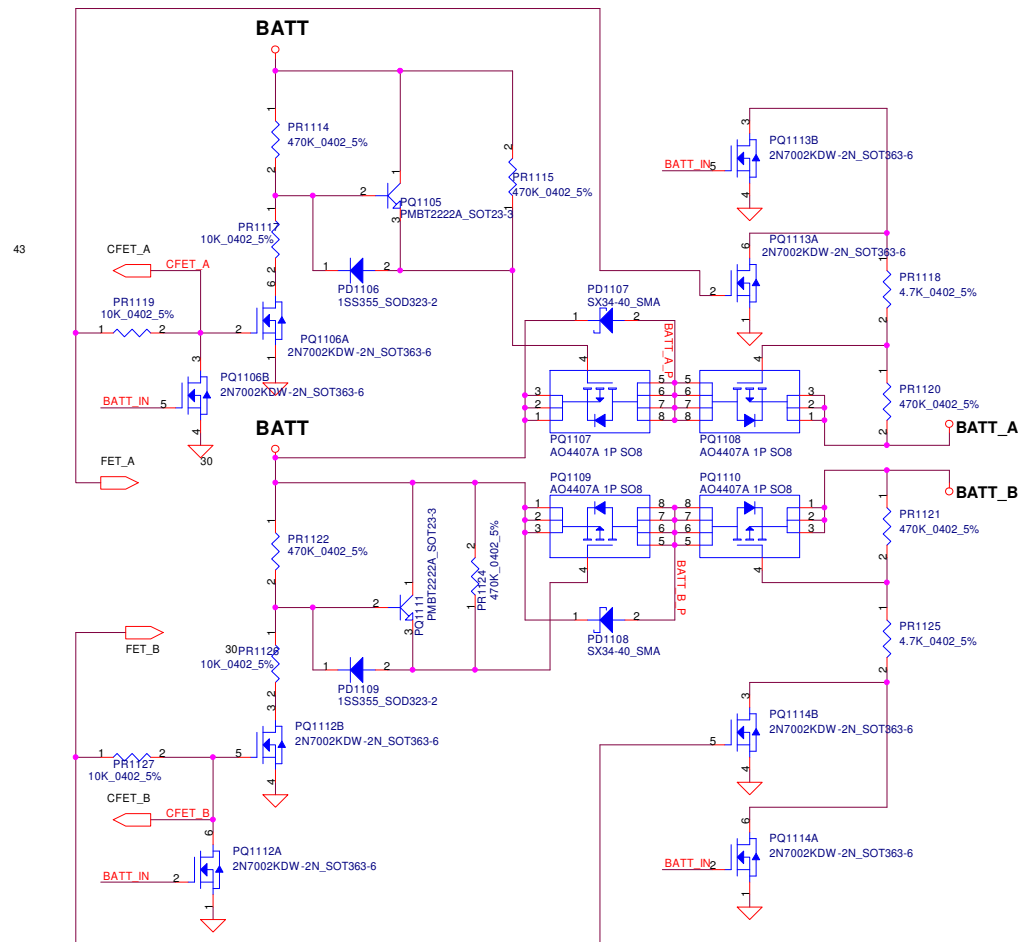
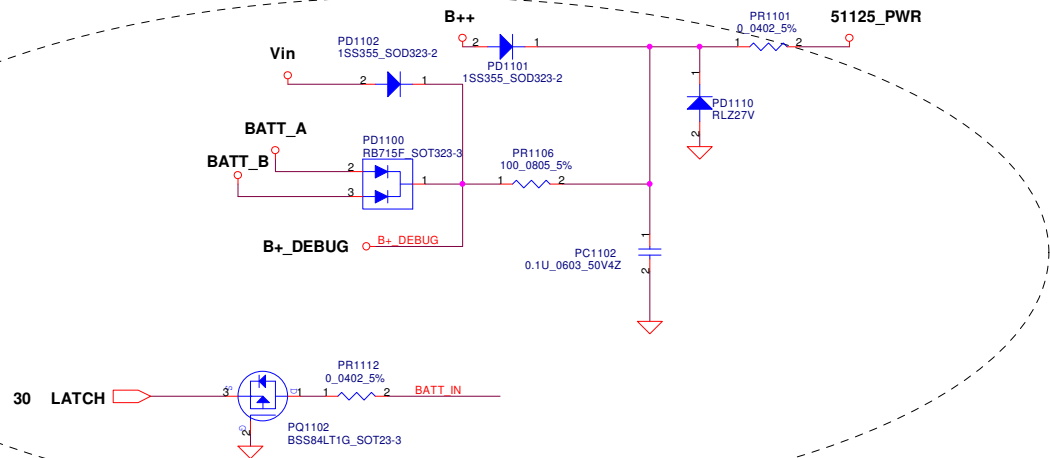
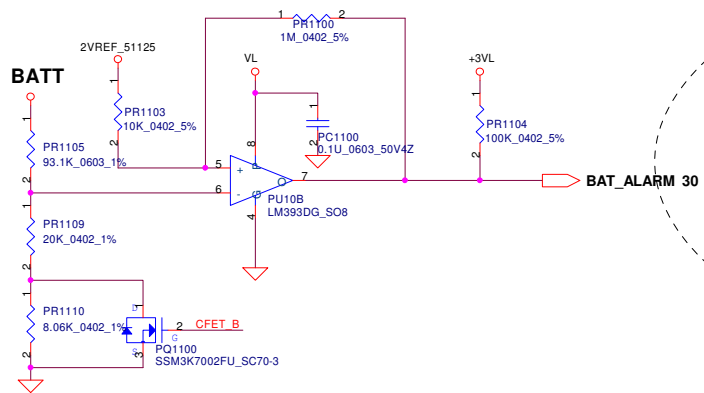
PH1 under CPU bottom side :
CPU thermal protection at 90 +/-3 degree C
(Need to be checked)



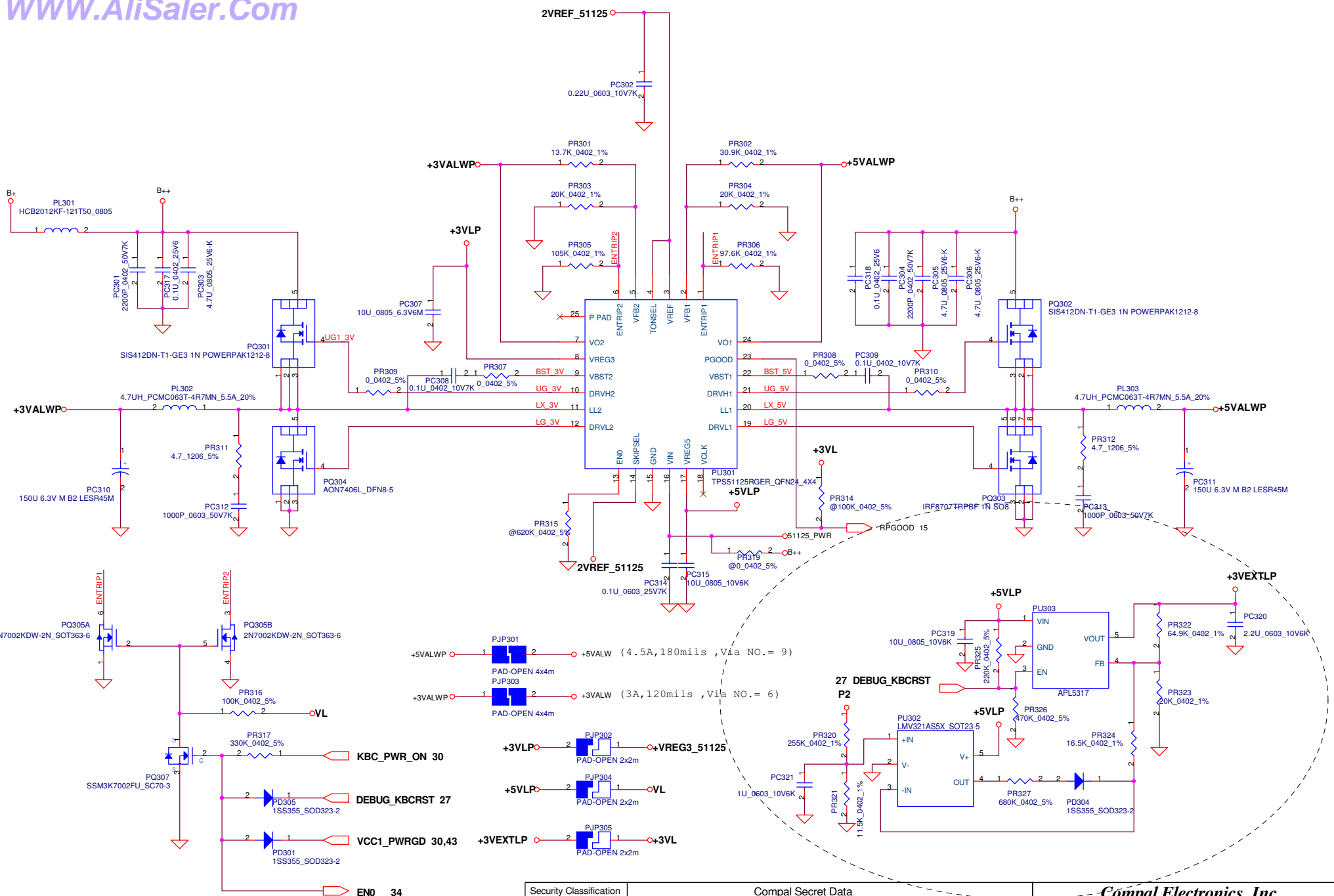
Security Classification		Compal Secret Data		Compal Electronics, Inc.	
Issued Date	2008/10/31	Deciphered Date	2009/10/31	Title	
THIS SHEET OF ENGINEERING DRAWING IS THE PROPRIETARY PROPERTY OF COMPAL ELECTRONICS, INC. AND CONTAINS CONFIDENTIAL AND TRADE SECRET INFORMATION. THIS SHEET MAY NOT BE TRANSFERRED FROM THE CUSTODY OF THE COMPETENT DIVISION OF R&D DEPARTMENT EXCEPT AS AUTHORIZED BY COMPAL ELECTRONICS, INC. NEITHER THIS SHEET NOR THE INFORMATION IT CONTAINS MAY BE USED BY OR DISCLOSED TO ANY THIRD PARTY WITHOUT PRIOR WRITTEN CONSENT OF COMPAL ELECTRONICS, INC.				DC-IN/ BATTERY CONN	
Size		Document Number		Rev	
Custom		LA-3942P			
Date		Saturday, May 16, 2009		Sheet 34 of 45	



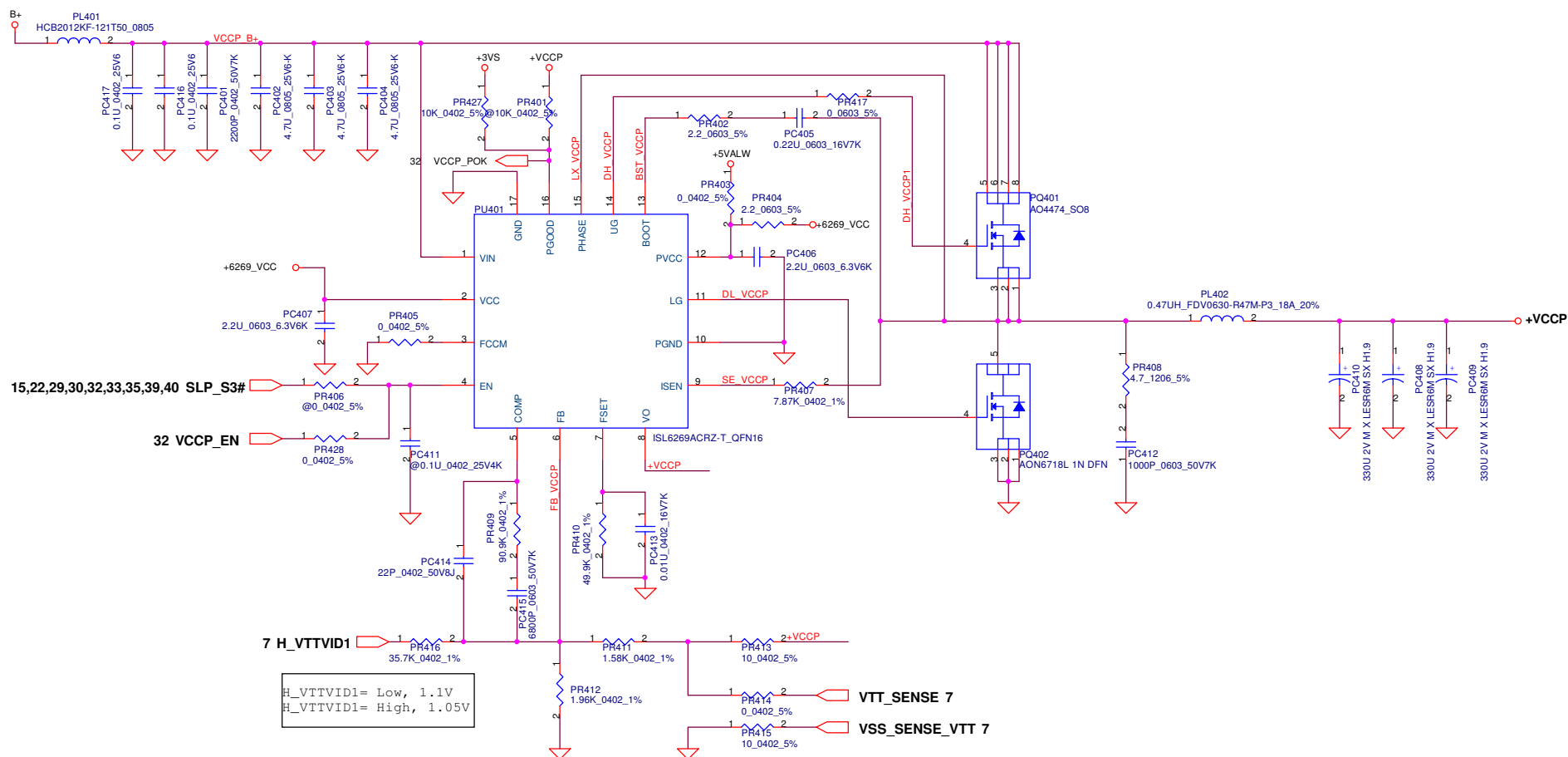
Security Classification		Compal Secret Data		Compal Electronics, Inc.						
Issued Date		2008/10/31	Deciphered Date	2009/10/31		Title				
THIS SHEET OF ENGINEERING DRAWING IS THE PROPRIETARY PROPERTY OF COMPAL ELECTRONICS, INC. AND CONTAINS CONFIDENTIAL AND TRADE SECRET INFORMATION. THIS SHEET MAY NOT BE TRANSFERRED FROM THE CUSTODY OF THE COMPETENT DIVISION OF R&D DEPARTMENT EXCEPT AS AUTHORIZED BY COMPAL ELECTRONICS, INC. NEITHER THIS SHEET NOR THE INFORMATION IT CONTAINS MAY BE USED BY OR DISCLOSED TO ANY THIRD PARTY WITHOUT PRIOR WRITTEN CONSENT OF COMPAL ELECTRONICS, INC.						Charger				
						Size	Document Number			Rev
							LA-3942P			0.1
						Date:	Saturday, May 16, 2009		Sheet	35 of 45



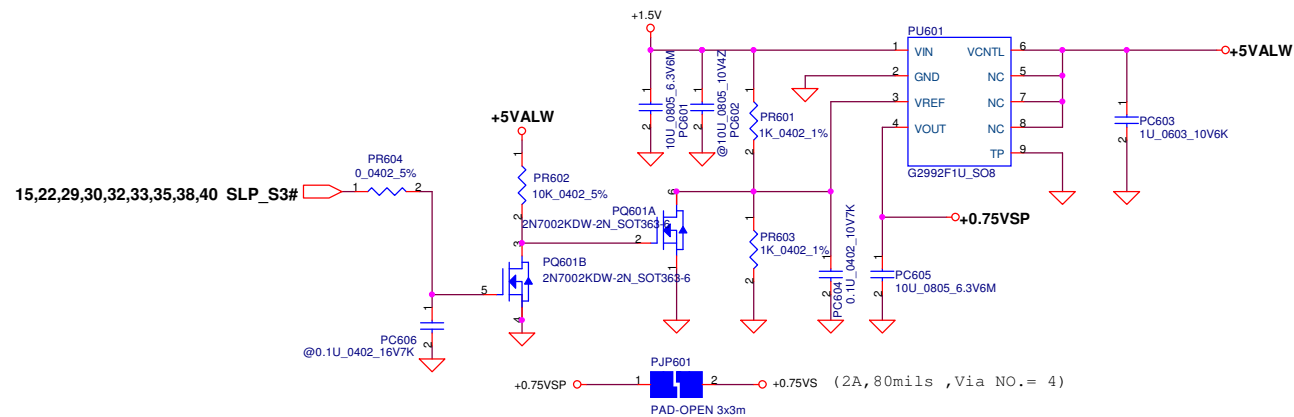
Security Classification	Compal Secret Data		Compal Electronics, Inc.	
Issued Date	2008/10/31	Deciphered Date	2009/10/31	Title
THIS SHEET OF ENGINEERING DRAWING IS THE PROPRIETARY PROPERTY OF COMPAL ELECTRONICS, INC. AND CONTAINS CONFIDENTIAL INFORMATION. IT IS NOT TO BE REPRODUCED, COPIED, OR TRANSMITTED IN ANY FORM OR BY ANY MEANS, WITHOUT THE WRITTEN PERMISSION OF COMPAL ELECTRONICS, INC.				Battery selector
Size	Custom	Document Number	LA-3942P	Rev
Date:	Saturday, May 16, 2009	Sheet	36	of 45



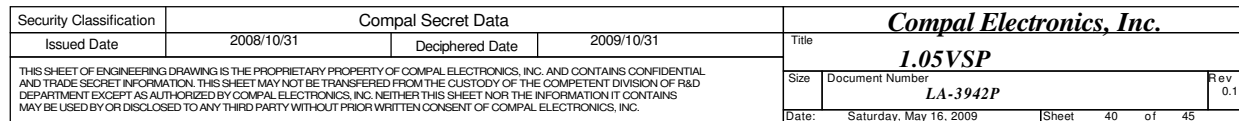
Security Classification	Compal Secret Data		Compal Electronics, Inc.	
Issued Date	2008/10/31	Deciphered Date	2009/10/31	Title
THIS SHEET OF ENGINEERING DRAWING IS THE PROPRIETARY PROPERTY OF COMPAL ELECTRONICS, INC. AND CONTAINS CONFIDENTIAL AND TRADE SECRET INFORMATION. THIS SHEET MAY NOT BE TRANSFERRED FROM THE CUSTODY OF THE COMPETENT DIVISION OF R&D DEPARTMENT EXCEPT AS AUTHORIZED BY COMPAL ELECTRONICS, INC. NEITHER THIS SHEET NOR THE INFORMATION IT CONTAINS MAY BE USED BY OR DISCLOSED TO ANY THIRD PARTY WITHOUT PRIOR WRITTEN CONSENT OF COMPAL ELECTRONICS, INC.				3.3VALWP/5VALWP
Size	Document Number	Rev		0.1
Custom	LA-3942P			
Date	Saturday, May 16, 2009	Sheet	37	of 45

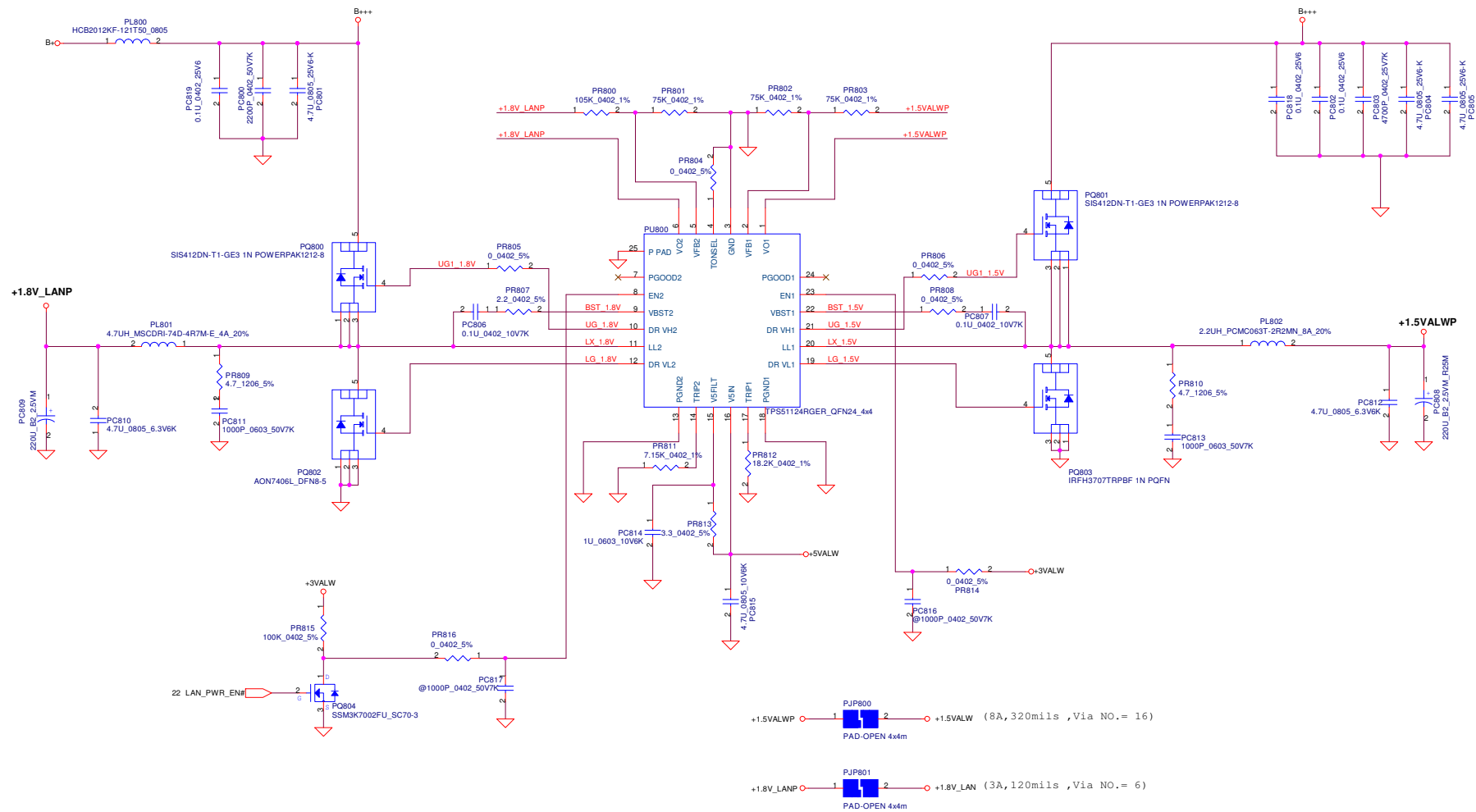


Security Classification		Compal Secret Data		Compal Electronics, Inc.	
Issued Date	2008/10/31	Deciphered Date	2009/10/31	Title	
THIS SHEET OF ENGINEERING DRAWING IS THE PROPRIETARY PROPERTY OF COMPAL ELECTRONICS, INC. AND CONTAINS CONFIDENTIAL AND TRADE SECRET INFORMATION. THIS SHEET MAY NOT BE TRANSFERRED FROM THE CUSTODY OF THE COMPETENT DIVISION OF R&D DEPARTMENT EXCEPT AS AUTHORIZED BY COMPAL ELECTRONICS, INC. NEITHER THIS SHEET NOR THE INFORMATION IT CONTAINS MAY BE USED BY OR DISCLOSED TO ANY THIRD PARTY WITHOUT PRIOR WRITTEN CONSENT OF COMPAL ELECTRONICS, INC.				1.05V_VCCP	
Size	Document Number	Rev			0.1
Date:	Saturday, May 16, 2009	Sheet	38	of	45

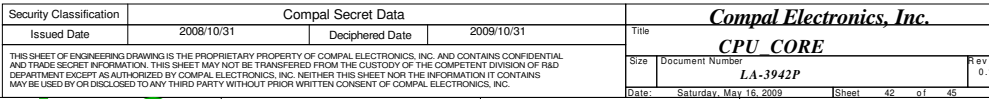


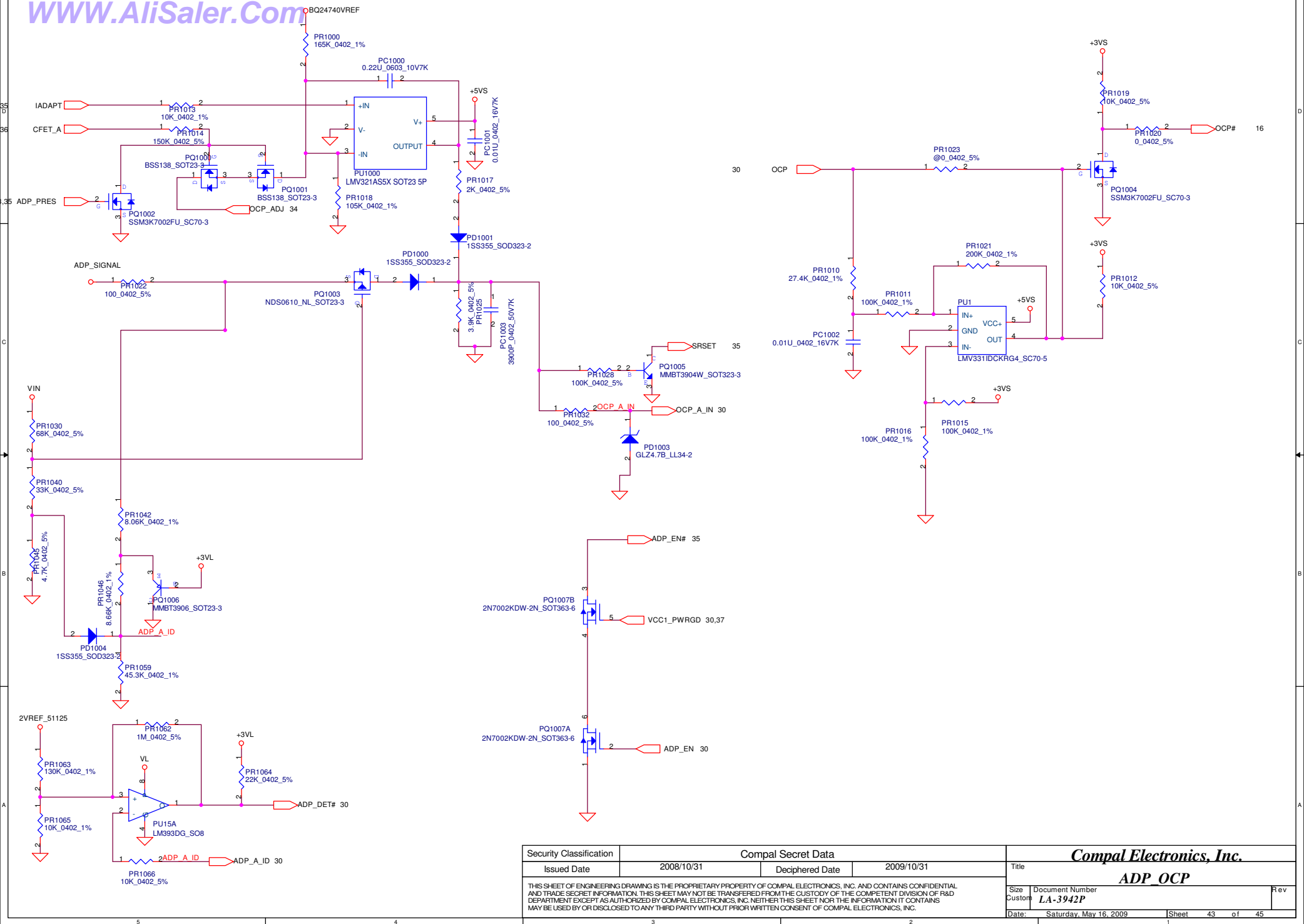
Security Classification		Compal Secret Data		Compal Electronics, Inc.	
Issued Date	2008/10/31	Deciphered Date	2009/10/31	Title	0.75VSP
THIS SHEET OF ENGINEERING DRAWING IS THE PROPRIETARY PROPERTY OF COMPAL ELECTRONICS, INC. AND CONTAINS CONFIDENTIAL AND TRADE SECRET INFORMATION. THIS SHEET MAY NOT BE TRANSFERRED FROM THE CUSTODY OF THE COMPETENT DIVISION OF R&D DEPARTMENT EXCEPT AS AUTHORIZED BY COMPAL ELECTRONICS, INC. NEITHER THIS SHEET NOR THE INFORMATION IT CONTAINS MAY BE USED BY OR DISCLOSED TO ANY THIRD PARTY WITHOUT PRIOR WRITTEN CONSENT OF COMPAL ELECTRONICS, INC.				Size	Document Number
					LA-3942P
				Date:	Saturday, May 16, 2009
				Sheet	39 of 45
				Rev	0.1



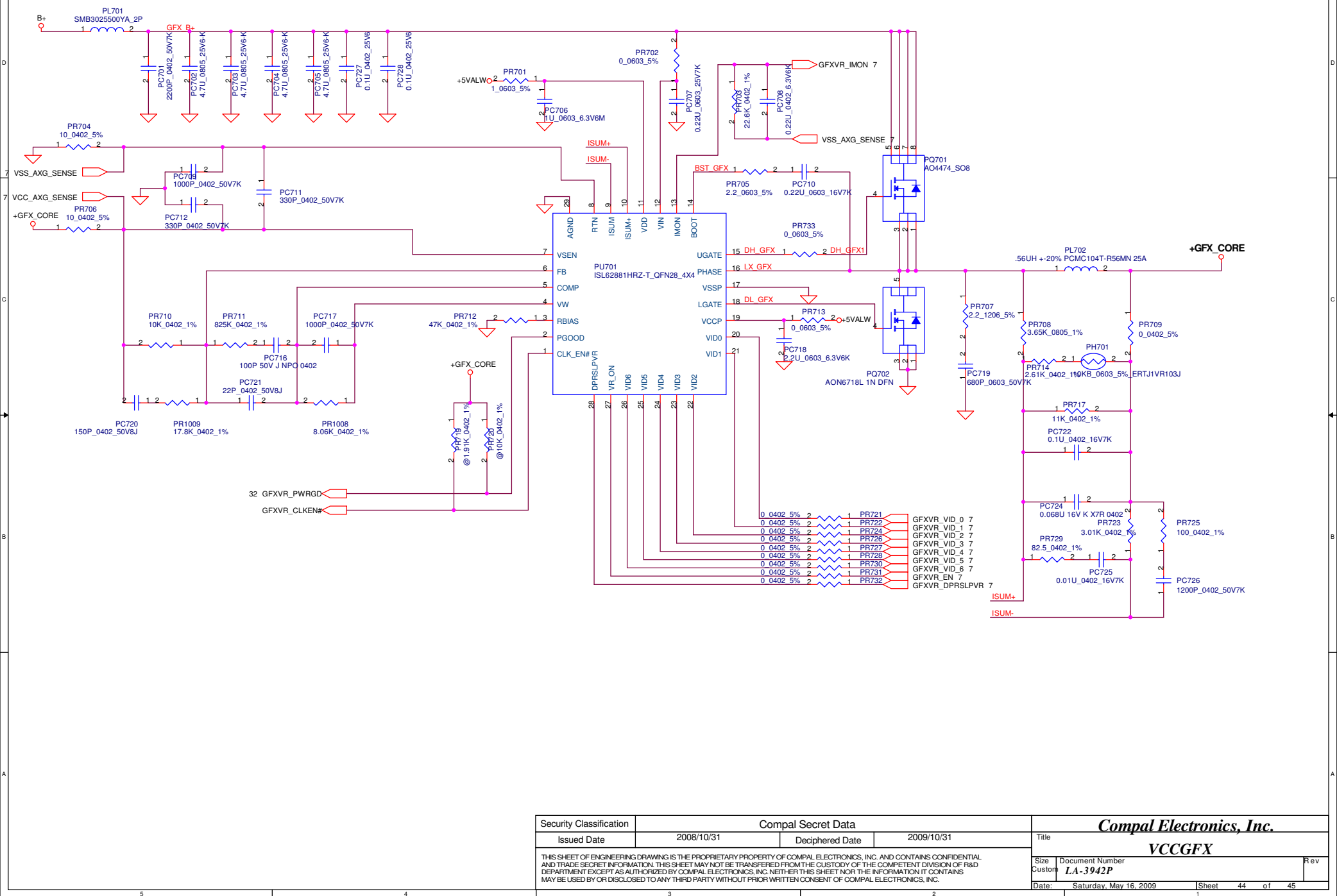


Security Classification		Compal Secret Data		Compal Electronics, Inc.	
Issued Date	2006/11/23	Deciphered Date	2007/11/23	Title	1.8V_LANP/1.5VALWP
THIS SHEET OF ENGINEERING DRAWING IS THE PROPRIETARY PROPERTY OF COMPAL ELECTRONICS, INC. AND CONTAINS CONFIDENTIAL AND TRADE SECRET INFORMATION. THIS SHEET MAY NOT BE TRANSFERRED FROM THE CUSTODY OF THE COMPETENT DIVISION OF R&D DEPARTMENT EXCEPT AS AUTHORIZED BY COMPAL ELECTRONICS, INC. NEITHER THIS SHEET NOR THE INFORMATION IT CONTAINS MAY BE USED BY OR DISCLOSED TO ANY THIRD PARTY WITHOUT PRIOR WRITTEN CONSENT OF COMPAL ELECTRONICS, INC.				Size	Document Number
					LA-3942P
				Date	Saturday, May 16, 2009
				Sheet	41 of 45





Security Classification		Compal Secret Data		Compal Electronics, Inc.	
Issued Date	2008/10/31	Deciphered Date	2009/10/31	Title	
THIS SHEET OF ENGINEERING DRAWING IS THE PROPRIETARY PROPERTY OF COMPAL ELECTRONICS, INC. AND CONTAINS CONFIDENTIAL AND TRADE SECRET INFORMATION. THIS SHEET MAY NOT BE TRANSFERRED FROM THE CUSTODY OF THE COMPETENT DIVISION OF R&D DEPARTMENT EXCEPT AS AUTHORIZED BY COMPAL ELECTRONICS, INC. NEITHER THIS SHEET NOR THE INFORMATION IT CONTAINS MAY BE USED BY OR DISCLOSED TO ANY THIRD PARTY WITHOUT PRIOR WRITTEN CONSENT OF COMPAL ELECTRONICS, INC.				ADP_OCP	
Size	Custom	Document Number	LA-3942P	Rev	
Date:	Saturday, May 16, 2009	Sheet	43	of 45	



Security Classification		Compal Secret Data		Compal Electronics, Inc.	
Issued Date	2008/10/31	Deciphered Date	2009/10/31	Title	VCCGFX
THIS SHEET OF ENGINEERING DRAWING IS THE PROPRIETARY PROPERTY OF COMPAL ELECTRONICS, INC. AND CONTAINS CONFIDENTIAL AND TRADE SECRET INFORMATION. THIS SHEET MAY NOT BE TRANSFERRED FROM THE CUSTODY OF THE COMPETENT DIVISION OF R&D DEPARTMENT EXCEPT AS AUTHORIZED BY COMPAL ELECTRONICS, INC. NEITHER THIS SHEET NOR THE INFORMATION IT CONTAINS MAY BE USED BY OR DISCLOSED TO ANY THIRD PARTY WITHOUT PRIOR WRITTEN CONSENT OF COMPAL ELECTRONICS, INC.				Size Custom	Document Number LA-3942P
				Date: Saturday, May 16, 2009	Sheet 44 of 45

